



**EBSDN**  
EVERYBODY SING & DANCE NOW

**SOLOS . DUOS . TRIOS . SINGING . TROUPES**

# 2025

## Syllabus



**0423 241 774**



**ADMIN@EBSDN.COM**



**WWW.EBSDN.COM**

# Age Rules - Solos, Duos, Trios.

**EBS DN AGE GROUPS - WE RESERVE THE THE RIGHT TO COMBINE AGE GROUPS AND SECTIONS BASED ON ENTRIES RECEIVED. AGE AS OF 1ST JAN 2025.**

## **SOLO AGE GROUPS**

**5 & UNDER  
6 & UNDER  
8 & UNDER  
10 & UNDER  
12 & UNDER  
14 & UNDER  
15 & OVER  
ADULTS**

## **DUOS & TRIOS**

**6 & UNDER  
8 & UNDER  
10 & UNDER  
12 & UNDER  
14 & UNDER  
15 & OVER  
ADULTS**

## **IMPRO**

**6 & UNDER  
8 & UNDER  
10 & UNDER  
12 & UNDER  
14 & UNDER  
15 & OVER**

# Age Rules - Troupes

**WE RESERVE THE THE RIGHT TO COMBINE AGE GROUPS AND SECTIONS BASED ON ENTRIES RECEIVED. A STUDIO MAY HAVE NO MORE THAN 2 ROUTINES IN ANY SECTION UNLESS THIS IS A DIRECT RESULT US (EBS DN) MERGING SECTIONS.**

**TROUPES AGE AS OF 1ST JANUARY 2025**

**TROUPES ARE BASED ON THE OLDEST DANCER IN THE TROUPE.**

## **TROUPE AGE GROUPS**

**5 & UNDER  
6 & UNDER  
8 & UNDER  
10 & UNDER  
12 & UNDER  
14 & UNDER  
16 & UNDER  
SENIORS  
ADULT (25&OVER)  
ALL ABILITIES (ANY AGE)**

# Troupe Sizes

**SMALL - 4 TO 11 COMPETITORS  
MEDIUM - 12 TO 19 COMPETITORS  
LARGE - 20+ COMPETITORS**

**WE RESERVE THE THE RIGHT TO COMBINE SECTIONS.  
MEDIUM SIZE TROUPES WILL ONLY BE OFFERED WHERE  
ENOUGH ENTRIES HAVE BEEN TAKEN OTHERWISE  
MEDIUM TROUPES WILL COMPETE IN LARGE TROUPE SECTION.**



# Awards

## **EBSDN PRESENTS ALL AWARDS ON STAGE AT THE SEND OF THE SESSION**

**ALL PERFORMERS MUST BE PRESENT TO COLLECT THE AWARDS. IF YOU ARE NOT PRESENT FOR THE AWARDS IT IS YOUR RESPONSIBILITY TO ARRANGE FOR SOMEONE TO COLLECT ON YOUR BEHALF, OR YOU FORFEIT THE AWARDS.**

**1ST- EBSDN GLASS TROPHY**

**2ND- EBSDN GLASS TROPHY**

**3RD- EBSDN GLASS TROPHY**

**HIGHLY COMMENDED- EBSDN RIBBON**

**ENCOURAGEMENT- EBSDN RIBBON**

**IMPROV- EBSDN TIARA OR MEDAL**

**TITLE WINNER- TIARA, SASH & CERTIFICATE**

**TITLE RUNNER UP- TIARA, SASH & CERTIFICATE**

**EBSDN ROYALTY- TIARA & CASH PRIZE**

**HIGHEST POINT SCORE- TIARA, SASH & CERTIFICATE**

## Entry Fees

**SOLOS - \$40 PER ROUTINE**

**TROUPES - \$45 PER ROUTINE**

**DUOS/TRIOS - \$50 PER ROUTINE**

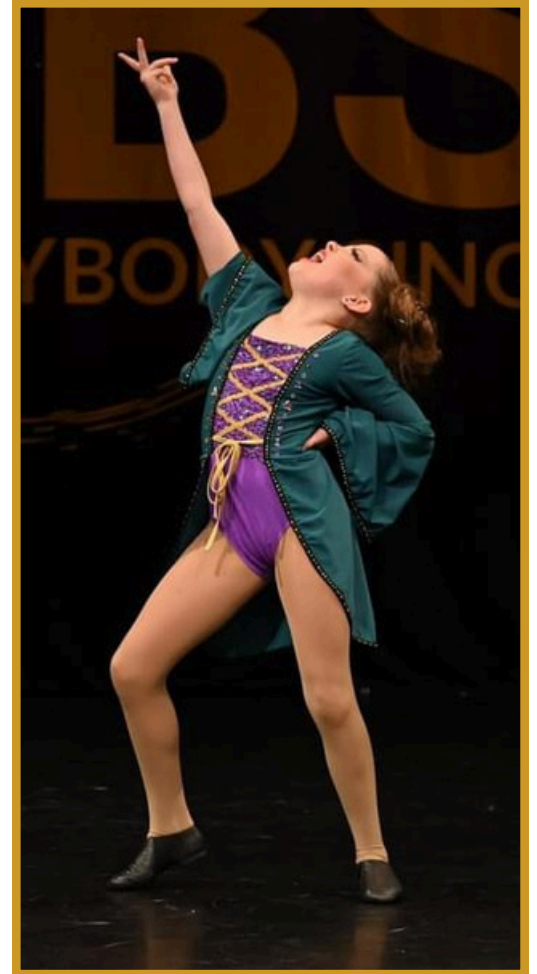
**IMPRO - \$20 PER STYLE**

**EBSDN TITLES - \$50**

**SHOWCASE QUALIFER - \$20**

**SHOWCASE DOTY QUALIFER - \$30**

**(DANCER OF THE YEAR)**



**PAYPAL CAN BE SELECTED WHEN ENTERING ONLINE, ONCE YOU SUBMIT YOUR ENTRIES WE WILL SEND YOU LINK TO PAY VIA PAYPAL. PLEASE NOTE IF YOUR FEES ARE NOT PAID YOUR ENTRIES WILL NOT BE PROGRAMMED, AND ALL MONIES PAID WILL BE FORFEITED. NO REFUNDS WILL BE GIVEN FOR CHANGE OF MIND (PART PAYMENT OR OTHERWISE) ENTRIES WILL CLOSE WITH THE COMPETITION IS FULL. SOME LOCATIONS ARE MORE POPULAR THAN OTHERS AND MAY SELL OUT IN A MATTER OF DAYS. IF YOU ARE LOOKING TO ENTER AN EBSDN EVENT WE RECOMMEND YOU DO THIS ASAP TO AVOID MISSING OUT. WE DO NOT OFFER WAITLISTS FOR SOLD OUT EVENTS.**

# *Title Sections*

**EBS DN TITLE SECTIONS SERVE AS ADD-ONS THAT MUST BE REGISTERED PRIOR TO PERFORMING. ADJUDICATORS WILL JUDGE THESE IN THEIR SECTIONS, THEY WILL NOT RE PERFORM.**

## **TECHNICAL TITLE**

**MUST PERFORM A MINIUM OF 2 ROUTINES IN ANY OF THE FOLLOWING SECTIONS**

- **CLASSICAL BALLET**
- **DEMI CHARACTER**
- **LYRICAL**
- **TRADITIONAL CONTEMPORARY**
- **COMMERCIAL CONTEMPORARY**

**THE EVALUATION CRITERIA FOR TECHNICAL TITLE WILL BE BASED ON THE FOLLOWING ELEMENTS:**

- **TECHNIQUE (35 POINTS)**
- **STAGE PRESENCE (20 POINTS)**
- **EXECUTION OF CHOREOGRAPHY (20 POINTS)**
- **OVERALL PRESNTATION (15)**
- **COSTUME AND GROOMING (10 POINTS)**

## **ENTERTAINMENT TITLE**

**MUST PERFORM A MINIUM OF 2 ROUTINES IN ANY OF THE FOLLOWING SECTIONS**

- **TAP**
- **JAZZ**
- **HIP HOP**
- **MUSICAL THEATRE**
- **BROADWAY JAZZ**
- **ACRO**
- **SONG & DANCE**
- **SINGING**

**THE EVALUATION CRITERIA FOR ENTERTAINMENT TITLE WILL BE BASED ON THE FOLLOWING ELEMENTS:**

- **TECHNIQUE (25 POINTS)**
- **STAGE PRESENCE (25 POINTS)**
- **EXECUTION OF CHOREOGRAPHY (20 POINTS)**
- **COSTUME AND GROOMING (15 POINTS)**
- **OVERALL PRESNTATION (15)**

# Mr & Mrs EBSDN Royalty

**MR & MRS EBSDN ROYALTY (NEW IN 2025)**

**MR & MRS EBSDN ROYALTY IS A SEPERATE SECTION, PERFORMERS MUST PERFORM A NEW ROUTINE IN ANY STYLE. THIS CANNOT BE A REPEAT PERFORMANCE.**

**THE PERFORMERS WILL BE JUDGED BASED ON BELOW CRITERIA.**

**TECHNIQUE (30 POINTS)**

**STAGE PRESENCE (20 POINTS)**

**EXECUTION OF CHOREOGRAPHY (20 POINTS)**

**COSTUME AND GROOMING (10 POINTS)**

**OVERALL PRESENTATION (20)**

**THE WINNER WILL RECEIVE A CASH PRIZE AND A TIARA!**





# Sections

**MY FIRST YEAR ON STAGE:** THIS IS FOR NEW PERFORMERS WHO HAVE BEEN COMPETING FOR LESS THAN 6 MONTHS & COMPETED IN LESS THAN 3 EISTEDDFODS AND NOT PLACED 1ST, 2ND OR 3RD AT ANY OTHER COMPETITION. IF YOU PLACE 1ST, 2ND OR 3RD AT ANY COMPETITION YOU NEED TO MOVE TO SPECIALLY RESTRICTED. A MAXIMUM OF 1 ROUTINE CAN BE ENTERED PER PERFORMER IF ENTERING THIS SECTION. YOU CANNOT QUALIFY FOR SHOWCASE NATIONAL FINALS IN THIS SECTION.

**SPECIALLY RESTRICTED:** THIS SECTION IS OPEN TO PERFORMERS WHO HAS NEVER PLACED 1ST IN ANY EISTEDDFOD OR COMPETITION, IN A SPECIALLY RESTRICTED OR ABOVE SECTION IN THAT PARTICULAR STYLE. YOU MUST MOVE TO RESTRICTED, WHEN YOU HAVE WON IN SPECIALLY RESTRICTED.

**RESTRICTED:** THIS SECTION IS OPEN TO PERFORMERS WHO, PRIOR TO THE CLOSING DATE FOR ENTRIES, HAVE NEVER BEEN PLACED FIRST IN A RESTRICTED SECTION OR HIGHER AT ANY EISTEDDFOD OR COMPETITION IN THAT PARTICULAR STYLE. THEY MOVE TO OPEN WHEN THEY WIN IN A RESTRICTED SECTION WITH 3 OR MORE COMPETITORS.

**OPEN:** THIS SECTION IS OPEN TO ANY PERFORMER WHO HAS PLACED 1ST IN A RESTRICTED SECTION IN THAT PARTICULAR STYLE. IF YOU HAVE WON OPEN SECTION IN THE LAST 12 MONTHS OR TRAIN MORE THAN 16 HOURS A WEEK YOU NEED TO ENTER ELITE.

**ELITE:** THIS SECTION IS OPEN TO ANY PERFORMER WHO HAVE WON IN ANY OPEN SECTION IN THE LAST 12 MONTHS OR TRAINS MORE THAN 16 HOURS A WEEK IN ANY STYLE OF DANCE/PERFORMANCE/TECHNIQUE/CONDITIONING/ACROBATICS. THIS INCLUDES AND IS NOT LIMITED TO PERFORMERS WHO ARE ENROLLED IN DISTANCE EDUCATION.

# Time Limits

MY FIRST YEAR ON STAGE - 2 MIN & 30 SEC  
8 & UNDER - 2 MIN & 30 SEC  
10 & OVER - 3 MINS  
DUOS/TRIOS - 3 MINS  
SINGING - 3MINS  
TROUPES - 4 MINS  
ENTERTAINMENT TROUPES- 5 MINS

PERFORMERS EXCEEDING THE TIME LIMITS WILL HAVE 5 POINTS DEDUCTED BEFORE ADJUDICATION IS GIVEN CRITIQUE. MUSIC WILL BE FADED AFTER THE 5 SECOND GRACE PERIOD.

PROPS HAVE A STRICT 45 SECOND SET UP/PACK UP TIME. PLEASE SEE PROPS SECTIONS FOR FURTHER INFORMATION.



# Dance Genres- Solos, Duos & Trios.

**CORRECT SHOES MUST BE WORN FOR ALL STYLES, PLEASE REFER TO PAGE 20.**

**COMMERCIAL JAZZ-** A ROUTINE USING JAZZ TECHNIQUE, WITH SUCH MOVES AS KICKS SPLITS, ISOLATIONS ETC. CANNOT CONTAIN NO MORE THAN 8 ACRO TRICKS, ACRO TRICKS DO NOT SUBSTITUTE FOR TECHNIQUE OR CHOREOGRAPHY AND GENERALLY WILL NEED TO RELATE TO THE ROUTINES JAZZ ELEMENT AND NOT JUST THERE TO FILL IN THE GAPS.

**TRADITIONAL JAZZ-** A ROUTINE USING JAZZ TECHNIQUE, WITH SUCH MOVES AS KICKS SPLITS, ISOLATIONS ETC. TRADITIONAL JAZZ CANNOT INCLUDE ANY OF THE FOLLOWING - BARANI, BACK/FRONT HANDSPRINGS, ANY FLIPS OR CONTORTION.

**FAST/SPEED TAP-** 4/4 CONTINUES TAPPING TO FAST RHYTHM.

**SLOW TAP-** 4/4 TAP, SLOW MUSIC.

**ANY STYLE TAP-** ANY STYLE OR TEMPO MUSIC OF ANY TIMING.

**HIP HOP-** A ROUTINE THAT UTILIZES HIP HOP/STREET STYLE MOVEMENTS.

**BROADWAY JAZZ-** A JAZZ ROUTINE THAT IS DYNAMIC, WITH AN ENTERTAINING CONCEPT OR A GIMMICK CAN BE FROM THEATRE, FILM OR MUSICAL, ANY TYPE OF SHOES INCLUDING CHORUS SHOES TO GIVE IT THE SHOW LOOK. NO MORE THAN 4 ACRO TRICKS PERMITTED.

**MUSICAL THEATRE-** A PRESENTATION FROM A STAGE OR FILM MUSICAL. IT CAN INCLUDE SINGING, DIALOGUE, ACTING AND DANCE. BACKING VOCALS PERMITTED.

**ACRO-** ACRO DANCE IS A CAPTIVATING FUSION OF CLASSICAL DANCE TECHNIQUES AND PRECISE ACROBATIC MOVEMENTS. IT SEAMLESSLY BLENDS ELEMENTS FROM BALLET, JAZZ, CONTEMPORARY DANCE, AND GYMNASTICS. IMAGINE DANCERS EXECUTING GRACEFUL PIROUETTES AND LEAPS, THEN SEAMLESSLY TRANSITIONING INTO IMPRESSIVE FLIPS, BALANCES, AND CONTORTIONS.

**OWN CHOICE-** THIS SECTION IS OPEN TO ALL STYLES / GENRES AND ACTS THAT DO NOT TYPICALLY FIT INTO ANY OTHER CATEGORIES. (POP AND LOCK, WALTZ TAP, BREAK DANCE ETC ETC) YOU MAY PERFORM ANY STYLE OF DANCE, BUT CANNOT REPEAT A DANCE PERFORMED IN ANOTHER CATEGORY. NO LIMIT ON THE NUMBER OF ACRO TRICKS.

**SONG & DANCE-** MUST BE A MIX OF LIVE VOCALS & DANCE IN ANY STYLE.

# Dance Genres- Solos, Duos, Trios.

**CORRECT SHOES MUST BE WORN FOR ALL STYLES, PLEASE REFER TO PAGE 20.**

**LYRICAL- ALSO KNOWN AS MODERN EXPRESSIVE. SLOW CONTROLLED BALLET MOVEMENTS, SET TO SLOW MUSIC OR BALLEE. ROUTINE MUST DEMONSTRATE BALANCE, FLEXIBILITY AND CONTROL UTILIZING THE LYRICS OR MOOD OF THE SONG.**

**TRADITIONAL CONTEMPORARY- INTERPRETIVE DANCE USING BALANCE AND CONTROL. MUST BE OF CONTEMPORARY STYLE ANGULAR AND ABSTRACT MOVEMENTS, FREE FLOWING AND RELAXED ABOUT THE BODIES NATURAL LINE & ENERGY, THE STYLE COULD BE TO ANY TYPE OF MUSIC AND TEMPO.**

**COMMERCIAL CONTEMPORARY- ANY MIX OF STYLES THAT HAS FREEDOM OF MOVEMENT, FLOOR WORK, OFF BALANCE MOVES, JAZZ AND GYMNASTIC ELEMENTS. EXECUTION OF STRONG SHAPES, VERY MUSICAL AND STORY DRIVEN.**

**CLASSICAL BALLET- ROUTINE THAT MUST INCLUDE CLASSICAL STEPS AND BALLET TECHNIQUE. FLAT BALLET OR POINTE SHOES MUST BE WORN.**

**DEMI CHARACTER- BASED ON CLASSICAL BALLET TECHNIQUE, THE PORTRAYAL OF A STORYLINE MUST BE STRONG AND EQUAL TO THE DANCE.**

**STUDENT CHOREOGRAPHY- MUST BE 100% STUDENT PRODUCED ANY STYLE, NO TEACHER ASSISTANCE.**

**ALL ABILITIES- DANCERS OF DIFFERENT DISABILITIES INCLUDING: AUTISM SPECTRUM DISORDER, PHYSICAL DISABILITIES, COMPLEX MEDICAL NEEDS, INTELLECTUAL IMPAIRMENTS, VISION IMPAIRMENTS, AND DEAF AND HARD OF HEARING STUDENTS.**





# Singing Genres

**VOCAL OWN CHOICE** - THIS SECTION IS OPEN TO ANY SONG AND ANY GENRE IS ALLOWED. IT CAN NOT BE A REPEAT OF A SONG THAT YOU ARE ALREADY PERFORMING, IT MUST BE A NEW SONG.

**VOCAL UP TEMPO** - UPTEMPO SONGS ARE QUICKER PACE, USUALLY JOLLY, EXUBERANT, PEPPY AND BRIGHT.

**VOCAL BALLAD** - BALLADS ARE SLOW, EMOTIONAL SONGS TYPICALLY CHARACTERISED BY THEIR HEARTFELT LYRICS AND MELODIOUS TUNES. THEY OFTEN CONVEY THEMES OF LOVE, HEARTBREAK, AND PERSONAL REFLECTION. AN EXAMPLE OF A POP BALLAD IS "SOMEONE LIKE YOU" BY ADELE.

**VOCAL MUSICAL THEATRE**- A SONG FROM A STAGE OR FILM MUSICAL, IT MUST BE IN COSTUME!

**VOCAL DISNEY OR PIXAR** - SONG FROM A DISNEY OR PIXAR MOVIE.

**VOCAL COUNTRY** - COUNTRY MUSIC IS A GENRE OF POPULAR MUSIC THAT ORIGINATED IN THE SOUTHERN UNITED STATES IN THE EARLY 1920S. IT IS CHARACTERIZED BY ITS DISTINCTIVE BLEND OF FOLK AND BLUES. OFTEN FEATURING LYRICS THAT FOCUS ON EVERYDAY LIFE, LOVE, HEARTBREAK, AND THE RURAL EXPERIENCE.

**SINGERS BACKING TRACKS ARE ALLOWED BUT THEY MUST NOT OVERPOWER THE SINGER! IF THEY DO, SINGER WILL LOSE 2 POINTS.**

**SINGERS IT IS HIGHLY SUGGESTED, YOU USE A MICROPHONE.**



# Impro Genres

## HOW DOES IT WORK?

ALL IMPRO SECTIONS HAVE A RANDOMLY SELECTED 1 MIN PIECE OF MUSIC. PERFORMERS WILL LISTEN TO THE TRACK ONCE IN THE WINGS BEFORE COMING ONTO STAGE TO PERFORM FOR ADJUDICATION. PLAIN DANCE ATTIRE MUST BE WORN (NO COSTUMES OR BLING) AND APPROPRIATE SHOES (PLEASE CHECK SHOE RULE) **PLEASE CHECK PAGE 14 FOR FURTHER CLARIFICATION.**

IMPROVISATION SECTIONS ARE A FANTASTIC WAY FOR YOUNG DANCERS TO DEVELOP STAGE PRESENCE, MUSICALITY & CHOREOGRAPHY STYLE WITHOUT THE PRESSURE OF REMEMBERING A ROUTINE.

**JAZZ-** DEMONSTRATE JAZZ TECHNIQUE, WITH SUCH MOVES AS KICKS SPLITS, ISOLATIONS ETC.

**HIP HOP-** A ROUTINE THAT UTILISES HIP HOP/STREET STYLE MOVEMENTS.

**TAP-** ANY STYLE OR TEMPO MUSIC OF ANY TIMING.

**LYRICAL-** ALSO KNOWN AS MODERN EXPRESSIVE. SLOW CONTROLLED BALLET MOVEMENTS, SET TO SLOW MUSIC OR BALLEE. ROUTINE MUST DEMONSTRATE BALANCE, FLEXIBILITY AND CONTROL UTILISING THE LYRICS OR MOOD OF THE SONG.

**CONTEMPORARY-** INTERPRETIVE DANCE USING BALANCE AND CONTROL. MUST BE OF CONTEMPORARY STYLE ANGULAR AND ABSTRACT MOVEMENTS, FREE FLOWING AND RELAXED ABOUT THE BODIES NATURAL LINE & ENERGY, THE STYLE COULD BE TO ANY TYPE OF MUSIC AND TEMPO.



# Troupe Genres

**JAZZ-** A ROUTINE USING JAZZ TECHNIQUE, WITH SUCH MOVES AS KICKS SPLITS, ISOLATIONS ETC. CANNOT CONTAIN NO MORE THAN 8 ACRO TRICKS, ACRO TRICKS DO NOT SUBSTITUTE FOR TECHNIQUE OR CHOREOGRAPHY AND GENERALLY WILL NEED TO RELATE TO THE ROUTINES JAZZ ELEMENT AND NOT JUST THERE TO FILL IN THE GAPS. **TIME LIMIT 4 MINS.**

**TAP-** ANY STYLE OR TEMPO MUSIC OF ANY TIMING. **TIME LIMIT 4 MINS.**

**HIP HOP-** A ROUTINE THAT UTILIZES HIP HOP/STREET STYLE MOVEMENTS. **TIME LIMIT 4 MINS.**

**LYRICAL-** ALSO KNOWN AS MODERN EXPRESSIVE. SLOW CONTROLLED BALLET MOVEMENTS, SET TO SLOW MUSIC OR BALLED. ROUTINE MUST DEMONSTRATE BALANCE, FLEXIBILITY AND CONTROL UTILIZING THE LYRICS OR MOOD OF THE SONG. **TIME LIMIT 4 MINS.**

**CONTEMPORARY-** INTERPRETIVE DANCE USING BALANCE AND CONTROL. MUST BE OF CONTEMPORARY STYLE ANGULAR AND ABSTRACT MOVEMENTS, FREE FLOWING AND RELAXED ABOUT THE BODIES NATURAL LINE & ENERGY, THE STYLE COULD BE TO ANY TYPE OF MUSIC AND TEMPO. **TIME LIMIT 4 MINS.**

**ACRO-** ACRO DANCE IS A CAPTIVATING FUSION OF CLASSICAL DANCE TECHNIQUES AND PRECISE ACROBATIC MOVEMENTS. IT SEAMLESSLY BLENDS ELEMENTS FROM BALLET, JAZZ, CONTEMPORARY DANCE, AND GYMNASTICS. IMAGINE DANCERS EXECUTING GRACEFUL PIROUETTES AND LEAPS, THEN SEAMLESSLY TRANSITIONING INTO IMPRESSIVE FLIPS, BALANCES, AND CONTORTIONS. **TIME LIMIT 4 MINS.**

**BALLET-** ROUTINE THAT MUST INCLUDE CLASSICAL STEPS AND BALLET TECHNIQUE. FLAT BALLET OR POINTE SHOES MUST BE WORN. **TIME LIMIT 4 MINS.**

**ENTERTAINMENT -** BROADWAY JAZZ , MUSICAL THEATRE, OR PRODUCTION. **TIME LIMIT 5 MINS.**

**ALL ABILITIES-** DANCERS OF DIFFERENT DISABILITIES INCLUDING: AUTISM SPECTRUM DISORDER, PHYSICAL DISABILITIES, COMPLEX MEDICAL NEEDS, INTELLECTUAL IMPAIRMENTS, VISION IMPAIRMENTS, AND DEAF AND HARD OF HEARING STUDENTS. **TIME LIMIT 4 MINS.**

# Program

**EBSDN WILL EMAIL OUT A LIVE DRAFT VERSION OF THE PROGRAM A MINIMUM OF 3 WEEKS PRIOR TO THE COMMENCEMENT OF THE EISTEDDFOD. WHILE THE PROGRAM IS IN DRAFT MODE YOU CAN EMAIL US TO ADVISE OF ANY CHANGES. [EMAIL@EBSDN.COM](mailto:EMAIL@EBSDN.COM)**

**WHEN EMAILING PROGRAM CHANGES YOU MUST INCLUDE THE FOLLOWING INFORMATION**

- **PERFORMERS NAME**
- **SECTION NUMBER**
- **CHANGES TO BE MADE - INCLUDING ANY SECTION NUMBERS THE ACT IS MOVING TOO**

**YOU WILL BE ABLE TO SEE ALL CHANGES LIVE ON THE DRAFT PROGRAM.**

**IF YOU WISH TO TRANSFER TO ANOTHER EBSDN COMPETITION, THIS IS POSSIBLE ONLY BEFORE THE DRAFT PROGRAM HAS BEEN EMAILED OUT. A ONE OFF \$50 PERFORMER TRANSFER FEE WILL BE CHARGED. A TRANSFER IS ONLY POSSIBLE IF THE TRANSFER TO COMPETITION IS NOT FULL. ONCE THE PROGRAM HAS BEEN RELEASED IN "DRAFT MODE" YOU CAN NO LONGER TRANSFER YOUR ENTRIES.**

**YOU CAN NOT TRANSFER A SINGLE ROUTINE, IF IT IS NOT READY FOR THE COMPETITION YOU ENTERED. YOU CANNOT TRANSFER FOR A CHANGE OF MIND, CLASH WITH ANOTHER COMPETITION, STUDIO REHEARSAL, BIRTHDAY PARTY ETC ETC.**

**THE PROGRAM WILL THEN MOVE TO A FINAL VERSION A MINIMUM OF 2 WEEKS PRIOR TO THE EVENT. ONCE THE PROGRAM IS IN "FINAL VERSION" NO FURTHER CHANGES CAN BE MADE.**

# Music

**EBSDN USES MUSIC UPLOADS FOR ALL MUSIC UPLOADS, VOICE CRITIQUE, SCORES & VIDEOS.**

**ALL MUSIC MUST BE UPLOADED A MINIMUM OF 7 DAYS PRIOR TO THE FIRST DAY OF THE COMPETITION. ANY MUSIC NOT UPLOADED IN THIS TIME FRAME WILL BE TAKEN AS THE PERFORMER IS NO LONGER DANCING AND THE ROUTINE WILL BE REMOVED FROM THE PROGRAM.**

**IF YOU MISS THE MUSIC CUT OFF DATE AND STILL WISH TO PERFORM YOU WILL BE CHARGED A ONE OFF FEE OF \$25 PER ROUTINE FOR US TO REOPEN MUSIC UPLOADS SO YOU CAN UPLOAD YOUR MUSIC. PLEASE NOTE UNDER NO CIRCUMSTANCES WILL WE ACCEPT A USB, DISC, PHONE OR IPOD FOR MUSIC. MUSIC UPLOADS IS THE ONLY WAY TO SUBMIT MUSIC TO EBSDN.**

**IT IS THE PARENT/GUARDIAN RESPONSIBILITY TO ENSURE THE CORRECT MUSIC HAS BEEN UPLOADED AND CHECKED. UNDER NO CIRCUMSTANCES CAN A STUDIO OR TEACHERS ACCOUNT BE USED TO UPLOAD MUSIC FOR SOLOS, DUOS & TRIOS. EBSDN WILL NOT TAKE RESPONSIBLY FOR INCORRECT MUSIC UPLOADED OR MUSIC THAT EXCEEDS THE TIME LIMITS. [WWW.MUSICUPLOADS.COM.AU](http://WWW.MUSICUPLOADS.COM.AU)**

# Videos & Photos

**PHOTOGRAPHY AND VIDEO TAPING:** UNDER NO CIRCUMSTANCES MAY ANY AUDIENCE MEMBER FILM OR PHOTOGRAPH ANY ROUTINE. VIDEO RECORDING AND PHOTOGRAPHY OF ANY KIND IS **STRICTLY PROHIBITED**. PHOTOGRAPHY AND VIDEO ARE ONLY ALLOWED DURING AWARDS PRESENTATIONS.

WE HAVE PUT THIS RULE IN PLACE TO PROTECT STUDIO CHOREOGRAPHY AND COSTUMING RIGHTS. MORE IMPORTANTLY WE ENFORCE THIS RULE TO PROTECT CHILDREN FROM HAVING THEIR IMAGES USED INAPPROPRIATELY AND WITHOUT CONSENT. WE URGE ALL STUDIO OWNERS, TEACHERS, AND PARENTS TO KEEP OUR PERFORMERS PHOTOGRAPHICALLY SAFE. EBSDN RESERVES THE RIGHT TO REMOVE THE MEDIA BEING USED OR THOSE USING IT FROM THE EVENT. FAILURE TO COMPLY TO THESE RULES COULD RESULT IN THE DISQUALIFICATION OF DANCER(S) AND/OR STUDIO(S). YOUR COOPERATION IS GREATLY APPRECIATED.

# Adjudicator

AT EBSDN WE ARE PROUD TO HAVE SOME OF THE BEST ADJUSTORS IN THE INDUSTRY. ALL ADJUDICATORS WILL BE ANNOUNCED PRIOR TO THE FINALISED PROGRAM. IF AN ADJUDICATOR IS UNABLE TO PERFORM HIS/HER DUTIES, EBSDN RESERVES THE RIGHT TO APPOINT A NEW JUDGE WITHOUT NOTICE. THE ADJUDICATOR'S DECISION IS FINAL. EBSDN IS A FAMILY FRIENDLY EVENT AND WE DO NOT OFFER A PROTEST SYSTEM. ALL VOICE CRITIQUES & SCORES WILL BE AVAILABLE ON MUSIC UPLOADS WITHIN 3 BUSINESS DAYS OF THE EVENT. WHERE A PERFORMER HAS A PERSONAL OR PROFESSIONAL RELATIONSHIP WITH THE ADJUDICATOR (INCLUDING FAMILY RELATION AND/OR TEACHER IN THE LAST 12 MONTHS), THEY WILL BE MARKED FOR CRITIQUE ONLY. THEY WILL NOT BE ELIGIBLE FOR PLACES DUE TO CONFLICT OF INTEREST.

# Props

PROPS CAN BE USED, HOWEVER, IT IS THE ENTRANT'S RESPONSIBILITY TO PLACE THEM IN THE ALLOCATED PROP AREA, LABEL THEM CORRECTLY, AND BRING THEM ON/OFF STAGE THROUGHOUT THE COMPETITION.

- SAFETY IS PARAMOUNT IN THE USE OF PROPS.
- PROPS MUST BE BUILT OFF STAGE, CARRIED, NOT DRAGGED ONTO THE STAGE.
- EBSDN DOES NOT TAKE RESPONSIBILITY FOR ANY INJURIES CAUSED BY THE USE OF PROPS.
- ANY PROPS LEFT OVER AT THE CONCLUSION OF THE EVENT, WILL BE PLACED IN THE BIN.
- FREE STANDING PROPS WITH A 45 SECOND TIME ALLOWANCE FOR PREPARATION IS PERMITTED.
- ALL PROPS MUST BE REMOVED IMMEDIATELY AFTER THE PERFORMER HAS FINISHED THE ROUTINE.
- ANY FEATHERS, ROSE PETALS, NEWSPAPER ETC ON A STAGE AFTER THE PERFORMANCE MUST BE CLEANED UP IMMEDIATELY IN THE 45 SECOND TIME ALLOCATION.

**NO POWDER . ROSIN . GLITTER . CONFETTI . WATER . WEAPONS . GLASS . ETC  
TAP COVERS MUST BE WORN AT ALL TIMES UNLESS ON STAGE**



# Improvisation

- **GIRLS MAY WEAR ANY PLAIN LEOTARD (NO BLING OR COSTUMES)**
- **PLAIN COLOURED SHORTS OR PANTS MAY BE WORN OVER THE TOP FOR HIP HOP**
- **BOYS MAY WEAR ANY PLAIN COLOURED SHORTS AND TOP**
- **NO HIGH WAISTED UNDIES AND CROPS.**
- **HAIR MUST BE OFF YOUR FACE**
- **CORRECT SHOES FOR EACH STYLE MUST BE WORN**
  - **JAZZ - JAZZ SHOES**
  - **HIP HOP - SNEAKERS**
  - **BALLET - BALLET SHOES**
  - **TAP - TAP SHOES**
  - **LYRICAL/CONTEMPORARY - BARE FOOT OR TURNING SHOES/HALF SOLES**
- **NO WEARING OF ONE SHOE IN IMPROVISATIONS, FOR LYRICAL & CONTEMPORARY**

**PERFORMERS WILL TAKE THEIR PLACE ON THE STAGE, LISTEN TO THE MUSIC, AND THEN STRIKE A POSE!! THE MUSIC WILL COMMENCE, AND YOU WILL DANCE, THE MUSIC ENDS, AND YOU MUST HOLD YOUR FINAL POSE. THE ADJUDICATOR WRITES DOWN A SCORE FOR EACH PERFORMER, JUDGED ON PERFORMANCE, TECHNIQUE AND MOST IMPORTANTLY CHOREOGRAPHY, NO VOICE CRITIQUES.**

# Day of Competition

- **ALL PERFORMERS ARE EXPECTED TO ARRIVE A MINIMUM OF ONE HOUR PRIOR TO PERFORMANCE TIME. EBSDN IS KNOWN TO RUN ON TIME AND SOMETIMES EARLY. WE RESERVE THE RIGHTS TO START A SECTION EARLY. A SECTION WILL NEVER START MORE THAN 45MINUTES TO AN ADVERTISED TIME IN THE FINAL PROGRAM.**
- **KEEP UP TO DATE WITH OUR LIVE PROGRAM WHICH IS SHARED ON THE EBSDN FACEBOOK GROUP**
- **ALL ENTRIES ARE EXPECTED TO PERFORM AT THEIR SCHEDULED DAY/TIME. EBSDN RESERVE THE RIGHT TO ALLOW A PERFORMER TO PERFORM OUT OF ORDER IN A SITUATION WHERE THEY HAVE LESS THAN 5 ACTS TO GET CHANGED.**
- **PERFORMERS IN OPEN SECTIONS FROM 8YRS AND OVER CANNOT REPEAT THEIR DANCE AFTER FORGETTING IT, THEY WILL BE JUDGED ON WHAT THEY HAVE PERFORMED.**
- **REPEATS WILL BE ALLOWABLE FOR YOUNGER AGE GROUPS AT THE DISCRETION OF THE ADJUDICATOR.**
- **REPEATS IN RESTRICTED SECTIONS 7 UNDER AFTER BREAKDOWN, WILL BE ABLE TO REPEAT THEIR PERFORMANCE FOR THE ADJUDICATOR AND MARKED ON SUCH AN ATTEMPT.**
- **ALL PERFORMERS ARE EXPECTED TO BE PRESENT FOR AWARDS AND ADJUDICATION. IF YOU ARE UNABLE TO BE PRESENT PLEASE ARRANGE FOR SOMEONE TO COLLECT THESE ON YOUR BEHALF.**
- **ONCE A PERFORMER HAS RECEIVED AN AWARD WE ASK FOR THEM TO JOIN US ON STAGE FOR A BIG GROUP PHOTO. PLEASE ENSURE THEY ARE WEARING THEIR STUDIO JACKETS AT THIS TIME SO THEY CAN REPRESENT THEIR STUDIO WITH PRIDE.**
- **THE AWARDS TABLE CAN GET QUITE BUSY DURING THIS TIME, IF YOU BELIEVE YOUR PERFORMER MAY HAVE PICKED UP THE INCORRECT AWARD BY ACCIDENT PLEASE COME AND SEE THE AWARDS TABLE BEFORE YOU LEAVE AND WE WILL FIX IT UP FOR YOU.**

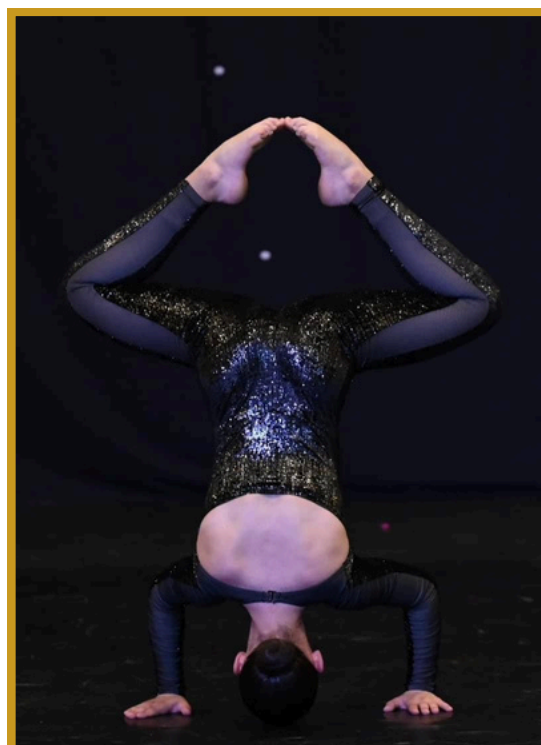
# Showcase Qualifier

**EBS DN IS PLEASED TO ADVISE WE ARE A SHOWCASE QUALIFYING EVENT. PLEASE NOTE THE FOLLOWING LOCATIONS ARE SHOWCASE QUALIFIERS.**

- **NSW SOUTH COAST INCLUDING ILLAWARRA, ULLADULLA & NOWRA**
- **REGIONAL NSW- GRIFFITH & WAGGA WAGGA.**
- **QLD ALL LOCATIONS INCLUDING GOLD COAST, BRISBANE, SUNSHINE COAST & MACKAY.**

**TO QUALIFY FOR SHOWCASE NATIONALS YOUR PERFORMER MUST PLACE 1ST, 2ND OR 3RD IN THEIR SECTION. PLEASE SEE THE BELOW TABLE TO KNOW WHICH SECTION THEY ARE ELIGIBLE FOR .**

	MY FIRST YEAR ON STAGE	SPECIALY RESTRICTED	RESTRICTED	OPEN	ELITE
4 & UNDER	DNQ	MINI RUBY	MINI DIAMOND	MINI ELITE	MINI ELITE
5 & UNDER	DNQ	MINI RUBY	MINI DIAMOND	MINI ELITE	MINI ELITE
6 & UNDER	DNQ	MINI RUBY	MINI DIAMOND	MINI ELITE	MINI ELITE
7 & UNDER	DNQ	PETITE RUBY	PETITE DIAMOND	PETITE ELITE	PETITE ELITE
8 & UNDER	DNQ	PETITE RUBY	PETITE DIAMOND	PETITE ELITE	PETITE ELITE
9 & UNDER	DNQ	JUNIOR RUBY	JUNIOR DIAMOND	JUNIOR ELITE	JUNIOR ELITE
10 & UNDER	DNQ	JUNIOR RUBY	JUNIOR DIAMOND	JUNIOR ELITE	JUNIOR ELITE
11 & UNDER	DNQ	PRE TEEN RUBY	PRE TEEN DIAMOND	PRE TEEN ELITE	PRE TEEN ELITE
12 & UNDER	DNQ	PRE TEEN RUBY	PRE TEEN DIAMOND	PRE TEEN ELITE	PRE TEEN ELITE
13 & UNDER	DNQ	TEEN RUBY	TEEN DIAMOND	TEEN ELITE	TEEN ELITE
14 & UNDER	DNQ	TEEN RUBY	TEEN DIAMOND	TEEN ELITE	TEEN ELITE
16 & UNDER	DNQ	SENIOR RUBY	SENIOR DIAMOND	SENIOR ELITE	SENIOR ELITE
17 & OLDER	DNQ	SENIOR RUBY	SENIOR DIAMOND	SENIOR ELITE	SENIOR ELITE
19 & OLDER	DNQ	ADULT RUBY	ADULT DIAMOND	ADULT ELITE	ADULT ELITE



## DANCER OF THE YEAR (DOTY)

**TO QUALIFY FOR SHOWCASE NATIONALS DOTY AT AN EBS DN COMPETITION YOU MUST COMPLETE THE FOLLOWING STEPS.**

- **ENTER AT A SHOWCASE QUALIFYING LOCATION**
- **ENTER A MINIMUM OF 3 ROUTINES PLUS TITLE SECTIONS.**
- **ALL ROUTINES MUST BE ENTERED INTO OPEN OR ELITE SECTIONS.**
- **PAY THE DOTY QUALIFIER FEE WHEN YOU REGISTER**

**ALL DOTY PERFORMERS WILL BE JUDGED DURING THEIR NORMAL SECTIONS. SUCCESSFUL DOTY QUALIFIERS WILL BE ANNOUNCED DURING AWARDS. DOTY QUALIFIERS MUST PERFORM IN ELITE SECTIONS AT SHOWCASE. WE HIGHLY ENCOURAGE OPEN AND ELITE PERFORMERS TO ENTER DOTY.**

## SHOWCASE DOTY AGE GROUPS

- JUNIOR - 10 & UNDER**
- PRE TEEN - 12 & UNDER**
- TEEN 14 & UNDER**
- SENIOR 18 & UNDER**

# Terms & Conditions

## **WELCOME TO EBSDN (EVERYBODY SING AND DANCE NOW)**

**PLEASE JOIN OUR FACEBOOK GROUP PAGE**

**[HTTPS://WWW.FACEBOOK.COM/GROUPS/454513217946102](https://www.facebook.com/groups/454513217946102)**

**BY ENTERING THE COMPETITION, YOU AGREE THAT WE ARE TO PROVIDE AN EVENT THAT IS A COMPETITION.**

**AT EBSDN OUR MAIN GOAL IS TO ALWAYS HAVE A SAFE PLATFORM FOR YOUNG PERFORMERS TO PERFORM ON. WHAT WE ARE GRATEFUL FOR IS YOUR CONTINUED SUPPORT, ALWAYS.**

**PLEASE READ AND AGREE AT THE POINT OF ENTRY OF YOUR ROUTINES – THIS IS A STRICT MUST DO! CONDITION OF ENTRY WITHOUT AGREEMENT ON YOUR ENTRY WILL NOT ALLOW YOUR ENTRY TO BE PROCESSED. THE HOSTING OF THIS COMPETITION IS SUBJECT TO THE EVOLVING IMPACT OF THE COVID-19 PANDEMIC. IT'S A CONDITION OF ENTRY THAT YOU FULLY AGREE TO ALL THESE TERMS LISTED WHEN YOU REGISTER AND TAKE PART IN THE COMPETITION.**

### **DATES AND VENUES.**

**ALL OF OUR DATES AND VENUES WILL BE PUBLISHED ON OUR WEBSITE EBSDN WWW.EBSDN.COM AND ARE CLEAR. WE HIGHLY ADVISE YOU BLOCK OUT ALL DATES, AS WHEN PROGRAMING WE DO OUR BEST TO KEEP TO AGE PROJECTED DATES, BUT THEY CAN CHANGE, BASED ON LACK OF OR VOLUME OF ENTRIES.**

**EBSDN RESERVES THE RIGHT TO ADD OR DELETE COMPETITION DAYS OR MOVE COMPETITION LOCATIONS.**

**EBSDN CAN MOVE LOCATIONS AND DATES IF REQUIRED, MEANING THE VENUE WE HAD BOOKED FOR SOME REASON, HAS TO MOVE OUR DATES, OR THE VENUE DOUBLE BOOKED THEIR VENUE.**

**EBSDN CAN MOVE TO ONLINE VIDEO SUBMISSIONS THAT ARE DUE TO UNFORESEEN CIRCUMSTANCES AND OUT OF OUR CONTROL. ENTRIES WILL NOT BE REFUNDED WHEN ALTERNATIVE OPTIONS ARE PUT IN PLACE AND WE CAN REPLACE THE SERVICE. IN THE EVENT OF A NATURAL DISASTER OR A VENUE IS NO LONGER ABLE TO BE USED, EBSDN RESERVES THE RIGHT TO TRANSFER THE DATES OF THE EVENT OR CANCEL, AND ALTERNATE ARRANGEMENTS WILL BE OFFERED AND ASSESSED BY OUR COMMITTEE & JENNY JONES.**

**PROJECTED DATES. EBSDN WILL PROJECT DATES, BUT PLEASE NOTE! YOU ARE BEST TO HOLD DATES UNTIL THE DRAFT PROGRAM IS RELEASED AS THERE ARE NO REFUNDS.**

**EBSDN HAS A 100% CANCELLATION FEE IF YOU DECIDE NOT TO ATTEND AND WITHDRAW. NO REFUND OR TRANSFERS WILL BE GIVEN WHEN YOU ARE A NO SHOW OR WITHDRAW, YOU AGREE TO THIS WHEN YOU REGISTER FOR THE EVENT AND WILL NOT MAKE A CLAIM FOR A REFUND UNDER THESE TERMS AND CONDITIONS IF THE EVENT IS STILL GOING AHEAD AND YOU WITHDRAW FOR WHATEVER REASON INCLUDING MEDICAL, ILLNESS, PERSONAL REASONS, INJURY OR COVID 19. ENTRIES WILL ONLY BE ACCEPTED ONLINE AND WHEN PAID IN FULL VIA EBSDN JOTFORM. ENTRIES WILL NOT BE TAKEN OVER THE PHONE. ENTRIES ARE TAKEN ON A FIRST COME FIRST-SERVED BASIS. OUR COMPETITIONS WILL SELL OUT. CLOSING DATES ARE ONLY A GUIDE AS COMPETITIONS WILL SELL OUT WELL BEFORE THE CLOSING DATE. COMPETITIONS WILL CHARGE A SPECTATOR DOOR ENTRY FOR SOLO. DUO. TRIO AND TROUPE SESSIONS.**

# Terms & Conditions

**DUE TO COVID19: IF IN THE EVENT OUR COMPETITION IS REQUIRED TO MODIFY, DELAY OR BE CANCELED DUE TO COVID19 GOVERNMENT RESTRICTIONS OR VENUE ISSUES, THIS INCLUDES BORDER CLOSURES, THE ABOVE TERMS AND CONDITIONS WILL STILL GO INTO EFFECT AND YOU AGREE TO THIS WHEN REGISTERING YOUR ENTRIES. WE WILL IN MOST CASES WORK TO HAVE THE EVENT GO AHEAD EVEN IF IT'S DELAYED TO A LATER DATE THIS WILL BE THE PRIORITY.**





# Terms & Conditions

## PAYMENTS AND ENTRY FEES

REGISTRATIONS ARE MADE ONLINE AND CAN BE PAID BY CREDIT CARD OR PAYPAL VIA JOTFORM.

ONCE A REGISTRATION IS RECEIVED IT WILL BE PROCESSED AND CONFIRMED BY OUR STAFF THEN FEES ARE NON REFUNDABLE UNDER A 100% CANCELLATION FEE/ NO SHOW POLICY - INCLUDING NOT BEING ABLE TO ATTEND DUE TO COVID19 RELATED CIRCUMSTANCES, WHICH ALSO INCLUDES CONTRACTING COVID19 AND YOU 'CAN'T' ATTEND THE EVENT. THIS FORMS PART OF THE AGREEMENT.

ONCE PAID YOUR ENTRY FEES ARE THEN ABSORBED & ACCOUNTED TOWARDS BACK-OFFICE EXPENSES, ADMIN STAFF WAGES, PLUS THE ACTUAL EVENT RUNNING COSTS.

IF YOU REQUIRE A TRANSFER TO ANOTHER EBSDN COMPETITION, THIS IS ONLY POSSIBLE WITH ONE OF THESE REASONS TO TRANSFER AND IT MUST BE ACCOMPANIED BY A MEDICAL CERTIFICATE OR SIMILAR:

BROKEN BONE, CHANGE OF WEEKEND WITH ANOTHER PARENT, LOSS IN THE FAMILY. IF YOU WISH TO TRANSFER TO ANOTHER EVENT, THIS IS ONLY POSSIBLE FOR \$60 PER DANCER IF.....

A. THE COMPETITION TO TRANSFER TO IS NOT FULL.

B. IF IT'S MORE THAN 60 DAYS BEFORE THE COMPETITION STARTS AND THE COMPETITION YOU ARE TRANSFERRING TO, THE DRAFT PROGRAM HAS NOT YET BEEN RELEASED AS YET , YOU MAY TRANSFER TO THAT COMPETITION, WITH A TRANSFER FEE OF \$60.00.

C. YOU CANNOT TRANSFER TO ANOTHER EVENT IF YOU ARE CANCELING FROM AN EVENT THAT THE SCHEDULE HAS ALREADY BEEN ANNOUNCED AND RELEASED FOR.

D. YOU CAN NOT TRANSFER A ROUTINE, IF IT IS NOT READY FOR THE COMPETITION YOU ENTERED.

E. YOU CANNOT TRANSFER FOR A CHANGE OF MIND, CLASH WITH ANOTHER COMPETITION, STUDIO REHEARSAL, BIRTHDAY PARTY ETC ETC.

ENTRIES PAID VIA A DANCE STUDIO OR PARENT CANNOT BE TRANSFERRED OR REFUNDED IF YOU CHANGE STUDIOS AND EBSDN WILL NOT GET INVOLVED. YOU AGREE, WE ARE UNABLE TO OFFER A CREDIT/TRANSFER IF YOU WITHDRAW OR SIMPLY DON'T TURN UP TO THE COMPETITION.

BY REGISTERING FOR THE COMPETITION AND TICKING THE BOX AT CHECK OUT, YOU ARE AGREEING THAT YOU HAVE READ AND AGREED TO ALL THE RULES, TERMS AND CONDITIONS RELATING TO PAYMENT OF FEES/REGISTRATIONS AND WILL FULLY COMPLY AND NOT CONTEST.

PERFORMERS ARE NOT ENTITLED TO ANY REFUND OF FEE OR TRANSFER OF FEES IN CASE OF NONAPPEARANCE IN ANY SECTION OR IF YOU OR YOUR PERFORMER/ PERFORMERS CHOOSE, THEY DO NOT WANT TO PERFORM ANYMORE OR ROUTINE OR ROUTINES ARE NOT POLISHED OR FINISHED. WE DO NOT PROVIDE REFUNDS FOR CHANGE OF MIND, CHANGE OF MIND REGARDING EBSDN RULES, CLASH WITH ANOTHER COMPETITION OR COMMITMENT OR THE PERFORMER/S DECIDE THEY DO NOT WANT TO PARTAKE IN COMPETITIONS, ANYMORE.

IF YOU HAVE MADE A MISTAKE (E.G., DOUBLE ENTRIES) OR THE PERFORMER IS INJURED (WITH PROOF) WE WILL TRANSFER TO ANOTHER ONE OF OUR COMPETITIONS, WITH THE ABOVE CRITERIA. BY ENTERING THE COMPETITION, YOU AGREE THAT WE ARE TO PROVIDE AN EVENT THAT IS A COMPETITION.



# Terms & Conditions

**PLEASE NOTE: IF THE EVENT IS GOING AHEAD EVEN WITH A DATE CHANGE DUE TO COVID LOCKDOWNS, THE ABOVE TERMS ARE ALL IN EFFECT AND BINDING AS A PROTECTION TO EVERYONE. WE CANNOT TRANSFER OR REFUND ENTRIES TO ANOTHER EVENT IF YOU ARE NOT ABLE TO ATTEND AS ALL ENTRIES REGISTERED FOR YOUR EVENT HAVE BEEN ABSORBED TO THE RUNNING COSTS.**

**ALL ATTENDEES AGREE WHEN TAKING PART AND REGISTERING AT COMPETITIONS, INCLUDING BUT NOT LIMITED TO, DANCERS, SINGERS, PARENTS/CAREGIVERS, TEACHERS, DIRECTORS, VOLUNTEERS AND PATRONS, INDEMNIFY AND KEEP INDEMNIFIED EBSDN (EVERYBODY SING AND DANCE NOW) AND ITS COMMITTEE MEMBERS AND OPERATORS ON BOTH A COMMERCIAL AND PERSONAL BASIS AGAINST ALL ACTIONS, SUITS, PROCEEDINGS, CLAIMS, DEMANDS, COSTS, AND EXPENSES WHATSOEVER WHICH MAY BE MADE AGAINST EBSDN. DIRECTORS/STAFF AND OR ITS VOLUNTEER MEMBERS IN CARRYING OUT THE DUTIES AND REQUIREMENTS IN TERMS OF THE EVENT AND THESE RULES.**

**NOT LIMITED TO LOSS OF PROPERTY OR PERSONAL INJURY TO THOSE WHO ATTEND THE COMPETITIONS. THIS IS FOR THE PROTECTION OF EVERYBODY TO FEEL CONFIDENT IN BEING PART OF EBSDN (EVERYBODY SING AND DANCE NOW)**

**FULL CARE BUT NO RESPONSIBILITY WILL BE TAKEN FOR INJURIES OR LOST PROPERTY OF ANYONE ATTENDING EBSDN ( EVERYBODY SING AND DANCE NOW ) PERSONS ENTERING AND PERFORMING IN THE PREMISES WHERE EBSDN IS HELD. DO SO AT THEIR OWN RISK.**

**SPECTATORS AND THEIR VISITORS, GUESTS, OUR VOLUNTEERS OR EMPLOYEES ENTER AND USE THESE PREMISES AT THEIR OWN RISK.**

**NEITHER EBSDN ( EVERYBODY SING AND DANCE NOW ) NOR THEIR REPRESENTATIVES, VOLUNTEERS OR AGENTS ARE LIABLE FOR LOSS OR DAMAGE TO ANY GUEST, VISITOR, EMPLOYEE OR ANY PERSONS PROPERTY, NOR FOR INJURY OR DEATH OF ANY GUEST OR VISITOR, WHILST THEY ATTEND EBSDN (EVERYBODY SING AND DANCE NOW )**

**IF THE EVENT IS STILL GOING AHEAD AND YOU WITHDRAW FOR WHATEVER REASON INCLUDING - YOU ARE A NO SHOW OR WITHDRAW, MEDICAL INJURY, COVID 19 OR ISOLATION.**

**NO REFUND OR TRANSFERS WILL BE GIVEN.**

**YOU AGREE TO THIS WHEN YOU REGISTER FOR THE EVENT, AND WILL NOT MAKE A CLAIM FOR A REFUND UNDER THESE TERMS AND CONDITIONS.**

**WHEN YOU ENTER EBSDN YOU GIVE CONSENT FOR 3 YEARS FOR EBSDN TO USE AND RETAIN THE NAME AND IMAGE OF YOUR CHILD FOR THE PURPOSES OF PUBLIC RELATIONS, MEDIA AND PROMOTION IN PRINT OR THROUGH SOCIAL MEDIA PROFILES. THIS CONSENT WILL REMAIN IN PLACE UNLESS YOU ADVISE OTHERWISE.**

**EBSDN RETAINS THE RIGHT TO CHANGE ANY OF THESE TERMS AND CONDITIONS IN REGARD TO OUR COVID-19 SAFETY PLAN IN LINE WITH THE CURRENT STATE OR FEDERAL GOVERNMENT GUIDELINES AT THE TIME OF COMPETITION.**

# Rules at a glance

**EBSDN AIMS TO PROVIDE A SAFE ENVIRONMENT WHERE PERFORMERS, TEACHERS AND FAMILIES ARE VALUED AND ENCOURAGED IN A POSITIVE MANNER BY ALL STAFF, VOLUNTEERS AND INDUSTRY PROFESSIONALS INVOLVED.**

**WE ADHERE TO CHILD SAFETY POLICIES AND WE AIM TO ALWAYS HAVE A SAFE PLATFORM FOR YOUNG PERFORMERS TO PERFORM ON.**

**EBSDN DOES TRY VERY HARD TO AGE BLOCK - SOLOS/DUOS/TRIOS AND TROUPES. ENTRY INTO EBSDN IS SUBJECT TO YOU AGREEING TO EBSDN TERMS AND CONDITIONS.**

## **MEDIA RELEASE**

**WHEN YOU ENTER EBSDN YOU GIVE CONSENT FOR 3 YEARS FOR EBSDN TO USE AND RETAIN THE NAME AND IMAGE OF YOUR CHILD FOR THE PURPOSES OF PUBLIC RELATIONS, MEDIA AND PROMOTION IN PRINT OR THROUGH SOCIAL MEDIA PROFILES. THIS CONSENT WILL REMAIN IN PLACE UNLESS YOU ADVISE OTHERWISE.**

## **BACKSTAGE**

**PARENTS ARE NOT ALLOWED BACKSTAGE EXCEPT WHEN HELPING WITH PROPS. TEACHERS ARE PERMITTED WITH TROUPES, THE MAXIMUM NUMBER IS THREE WITH LARGE TROUPES AND TWO WITH SMALL TROUPES.**

## **SIDESTAGE**

**THERE WILL BE NO CROWDING AT THE SIDE STAGE OR IN THE WINGS OF THE STAGE. ONLY TWO PEOPLE ARE ALLOWED SIDESTAGE WHILE A PERFORMER IS ON STAGE, AS IT IS VERY DISTRACTING FOR THE PERSON WHO IS PERFORMING ONSTAGE. DISTRACTION FROM THE SIDE OF THE STAGE WILL NOT BE TOLERATED WHILE A PERFORMER IS PERFORMING AND IT COULD LEAD TO DISQUALIFICATION. PROMPTING IS ONLY ALLOWED FOR TINY TOTS AND PETITES. CURTAINS WILL NOT BE IN USE AT THE EBSDN.**

## **ADJUDICATOR**

**IF AN ADJUDICATOR IS UNABLE TO PERFORM HIS/HER DUTIES, EBSDN RESERVES THE RIGHT TO APPOINT A NEW ADJUDICATOR WITHOUT NOTICE. THE ADJUDICATOR'S DECISION IS FINAL.**

## **FIRST AID**

**BE SAFE AND COME PREPARED! NOT ALL VENUES HAVE THE FACILITIES FOR ICE-PACKS ETC EACH STUDIO, WHO HAS ENTERED IN TROUPES MUST PROVIDE THEIR OWN FIRST AID PERSON, ICE, AND FIRST AID KIT. EBSDN STAFF ARE NOT RESPONSIBLE FOR PROVIDING ANY FIRST AID EQUIPMENT OR ICE/HEAT PRODUCTS.**

## **SHOES**

**CORRECT SHOES FOR EACH STYLE MUST BE WORN  
NO WEARING OF ONE SHOE IN ANY STYLE**

- **JAZZ - JAZZ SHOES**
- **HIP HOP - SNEAKERS**
- **BALLET - BALLET SHOES**
- **TAP - TAP SHOES**
- **LYRICAL/CONTEMPORARY - BARE FOOT OR TURNING SHOES/HALF SOLES**

## **TAP SHOES**

**TAP COVERS MUST BE WORN AT ALL TIMES.  
TAP SHOES MUST NOT BE WORN WITHOUT TAP COVERS.  
NO JINGLE TAPS ARE ALLOWED**

# Rules at a glance

## MUSIC

**ALL MUSIC PROVIDED TO EBSDN (EVERYBODY SING AND DANCE NOW) BY A STUDIO OR PARTICIPANT (“ENTRANT”), FOR USE AT AN EBSDN EVENT, MUST BE PROPERLY LICENSED FOR LIVE PERFORMANCE USE. IT IS THE ENTRANT’S RESPONSIBILITY TO OBTAIN ALL LICENSES NECESSARY FOR USE OF MUSIC AT AN EBSDN COMPETITION.**

**THEREFORE, BY VIRTUE OF ENTERING THIS EVENT, IT IS AGREED THAT PARTICIPANTS, GUARDIANS, AND TEACHERS AGREE TO HOLD HARMLESS AND INDEMNIFY EBSDN (EVERYBODY SING AND DANCE NOW) OR ITS OFFICERS, DIRECTORS, OFFICIALS, STAFF OR EMPLOYEES FROM ANY AND ALL CLAIMS ASSOCIATED WITH USE OF ENTRANT’S SELECTED MUSIC.**

**MUSIC SELECTED SHOULD BE AGE APPROPRIATE AND FREE FROM ANY EXPLICIT LANGUAGE. IF EXPLICIT LANGUAGE IS USED, THE MUSIC WILL BE STOPPED IMMEDIATELY, AND THE PERFORMER/S WILL BE ASKED TO LEAVE THE STAGE AND BE DISQUALIFIED FROM THE SECTION.**

## MUSIC UPLOADS

**EBSDN USES MUSIC UPLOADS FOR ALL MUSIC AND AUDIO CRITIQUES -**

**[WWW.MUSICUPLOADS.COM.AU](http://WWW.MUSICUPLOADS.COM.AU)**

**MUSIC WILL NEED TO BE UPLOADED ONCE THE FINAL PROGRAM IS RELEASED.**

**PLEASE NOTE: NO MUSIC WILL BE ACCEPTED ON THE DAY.**

**ALL MUSIC MUST BE UPLOADED BY DUE DATE.**

**IF YOU DO NOT UPLOAD YOUR MUSIC ON TIME, YOUR PERFORMER WILL BE REMOVED FROM THE PROGRAM AND WILL NOT BE ABLE TO PERFORM.**

## SAFETY

**WE HAVE TAKEN EXTRA HEALTH AND SAFETY MEASURES – FOR OUR PERFORMERS, GUESTS AND EBSDN STAFF. WE ASK THAT YOU FOLLOW ALL POSTED INSTRUCTIONS WHILE ATTENDING A COMPETITION.**

**HOWEVER, AN INHERENT RISK OF EXPOSURE TO COVID-19 CURRENTLY EXISTS IN ANY PUBLIC PLACE WHERE PEOPLE ARE PRESENT.**

**COVID-19 IS AN EXTREMELY CONTAGIOUS DISEASE THAT CAN LEAD TO SEVERE ILLNESS AND DEATH.**

**SENIOR CITIZENS AND GUESTS WITH UNDERLYING MEDICAL CONDITIONS ARE ESPECIALLY VULNERABLE.**

**BY VISITING AN EBSDN COMPETITION, YOU VOLUNTARILY ASSUME ALL RISKS RELATED TO EXPOSURE TO COVID-19.**

## INDEMNITY

**ALL ATTENDEES AGREE WHEN TAKING PART AND REGISTERING FOR EVERYBODY SING AND DANCE NOW (EBSDN) (COMPETITIONS), INCLUDING BUT NOT LIMITED TO, DANCERS, SINGERS, PARENTS/CARE GIVERS, TEACHERS, DIRECTORS, VOLUNTEERS AND PATRONS, INDEMNIFY AND KEEP INDEMNIFIED EBSDN AND ITS COMMITTEE MEMBERS AND OPERATORS ON BOTH A COMMERCIAL AND PERSONAL BASIS AGAINST ALL ACTIONS, SUITS, PROCEEDINGS, CLAIMS, DEMANDS, COSTS, AND EXPENSES WHATSOEVER WHICH MAY BE MADE AGAINST EVERYBODY SING AND DANCE NOW (EBSDN) DIRECTORS/STAFF AND OR ITS VOLUNTEER MEMBERS IN CARRYING OUT THE DUTIES AND REQUIREMENTS IN TERMS OF THE EVENT AND THESE RULES. NOT LIMITED TO LOSS OF PROPERTY OR PERSONAL INJURY TO THOSE WHO ATTEND THE COMPETITIONS.**

# Rules at a glance

## **BULLYING**

**BULLYING OR INTIMIDATION AT AN EBSDN COMPETITION IS NOT ACCEPTABLE AND ANY EVIDENCE OF SUCH, WILL RESULT IN INSTANT DISMISSAL FROM THE COMPETITION. SPORTSMANLIKE BEHAVIOR IS ALWAYS EXPECTED. FAILURE TO DISPLAY PROPER DECORUM COULD RESULT IN IMMEDIATE DISQUALIFICATION. THIS INCLUDES ATTEMPTING TO RECRUIT STUDENTS FROM OTHER STUDIOS TO ATTEND YOUR STUDIO. THIS IS NOT ACCEPTABLE!!**

## **INJURY OR LOSS**

**THERE IS AN INHERENT RISK OF INJURY INVOLVED WITH PERFORMING AND ATHLETIC ACTIVITY.**

**EBSDN (EVERYBODY SING AND DANCE NOW) MAKES NO WARRANTIES OR REPRESENTATIONS, EITHER EXPRESSED OR IMPLIED, TO PREVENT INJURIES TO INDIVIDUAL PARTICIPANTS.**

**PERFORMERS AND TEACHERS UNDERSTAND THAT ANY COMPETITORS IN DANCE COMPETITIONS TAKE INHERENT RISKS.**

**THESE INCLUDE, BUT ARE NOT LIMITED TO, SPRAINS, BRUISES, PULLED MUSCLES, AND BROKEN BONES.**

**PARTICIPATION IN THIS COMPETITION INDICATES THE ACCEPTANCE OF SUCH RISKS BY PERFORMERS.**

**THEREFORE, BY VIRTUE OF ENTERING THIS EVENT, IT IS AGREED THAT PARTICIPANTS, GUARDIANS AND TEACHERS AGREE TO HOLD HARMLESS AND INDEMNIFY EBSDN (EVERYBODY SING AND DANCE NOW) ITS OFFICERS, DIRECTORS OFFICIALS, STAFF, EMPLOYEES OR THE HOSTING FACILITY FOR INJURIES SUSTAINED OR ILLNESSES CONTRACTED WHILE IN ATTENDANCE OR PARTICIPATING IN ANY ACTIVITY RELATED TO A EBSDN® COMPETITION. EBSDN (EVERYBODY SING AND DANCE NOW) AND THE HOSTING FACILITY ARE NOT RESPONSIBLE FOR PERSONAL INJURY TO CONTESTANTS OR SPECTATORS.**

## **CHOREOGRAPHY OWNERSHIP**

**TEACHERS, PARENTS, PERFORMERS AND CHOREOGRAPHERS MUST ALL BE AWARE OF WHAT ROUTINES ARE BEING PERFORMED.**

**IF A PERFORMER HAS LEFT A STUDIO PLEASE ENSURE YOU HAVE PERMISSION FROM PAST CHOREOGRAPHERS/TEACHERS TO BE ABLE TO CONTINUE TO PERFORM ROUTINES WHOSE OWNERSHIP MAY BE IN QUESTION. DISPUTES IN REGARDS TO THIS MUST BE MEDIATED AND HANDLED WITH CLASS (OUTSIDE OF SOCIAL MEDIA OR THE EVENT ITSELF) BY THE PARTIES INVOLVED. IF ON SOCIAL MEDIA, ANYONE MENTIONS EBSDN WE WILL NOT GET INVOLVED IN THIS, WE SIMPLY ASK THAT YOU DO THE RIGHT THING.**

## **DRESSING ROOMS**

**TROUPES MUST BE SUPERVISED AT ALL TIME.**

**EVERYONE MUST BE ADHERE TO VENUES POLICIES AND PROCEDURES AT ALL TIMES.**

**DRESSING ROOMS WILL BE ALLOCATED TO TROUPES AT EBSDN.**

**IN SHARED AREAS ALL PERFORMERS, TEACHERS AND PARENTS ARE EXPECTED TO SHOW RESPECT FOR EVERYONE'S SPACE AND BELONGINGS.**

**BE MINDFUL WHEN REHEARSING OF NOISE LEVEL OF MUSIC AND CHANTS.**

**REMEMBER IT IS A DRESSING ROOM, NOT A MEETING SPACE!**



# Rules at a glance

**NO TIC TOC VIDEOS TO BE MADE WHILE ON SITE.  
A \$50 FINE WILL BE CHARGED**

## **RUBBISH**

**PLEASE PLACE ALL YOUR RUBBISH IN BINS PROVIDED AND IF ANY INDIVIDUAL, STUDIO OR SCHOOL FOUND TO HAVE CAUSED DAMAGE TO THEIR DRESSING SPACE, A FEE OF \$200 WILL BE CHARGED.**

## **IMPORTANT DANCE FLOOR SAFETY INFORMATION**

**NO FORM OF LIQUID, GEL, AEROSOL, GLITTER, POWDER OR PAINT MAY BE USED THAT WILL PHYSICALLY ALTER THE SURFACE OF THE TARKETT FLOOR. \* NOTE: ROSEN MUST BE SELF-CONTAINED AND CANNOT BE APPLIED ON SHOES ON THE TARKETT FLOOR. IF A DANCER IS REQUESTING TO USE ROSIN, EBSDN MUST KNOW UPON REGISTRATION SO THAT SCHEDULE ADJUSTMENTS CAN BE MADE TO CLEAN UP THE TARKETT RESIDUE POST-PERFORMANCE. THERE WILL BE A POINT DEDUCTION IF EBSDN IS NOT NOTIFIED ABOUT THE ROSIN USAGE AND THE TARKETT FLOOR IS AFFECTED DURING THE ACT. IF THE STAGE IS LITTERED DURING A PERFORMANCE, PERFORMERS ARE EXPECTED TO CLEAN THE STAGE COMPLETELY OF ALL DEBRIS IN ONE MINUTE OR LESS.**

**A ONE-POINT DEDUCTION WILL BE GIVEN TO ANY ACT THAT DOES NOT CLEAN UP THE STAGE WITHIN THE ONE MINUTE TIME LIMIT. A ONE POINT DEDUCTION WILL ALSO BE GIVEN TO AN ACT THAT USES A SUBSTANCE THAT IS NOT PERMITTED AND CREATES A SAFETY HAZARD ON THE TARKETT FLOOR.**

## **PARENT OR CAREGIVER RESPONSIBILITY**

**EBSDN IS IN NO WAY ANY FORM OF CHILDCARE FACILITY. EVERY UNDER AGE PERFORMER MUST BE ACCOMPANIED BY A PARENT OR LEGAL GUARDIAN WHO ACCEPTS FULL RESPONSIBILITY FOR THE PERFORMER AT ALL TIMES. ANY PERFORMER SEEN TO BE WITHOUT A GUARDIAN WILL RESULT IN EBSDN CONTACTING AUTHORITIES TO RESPOND.**

