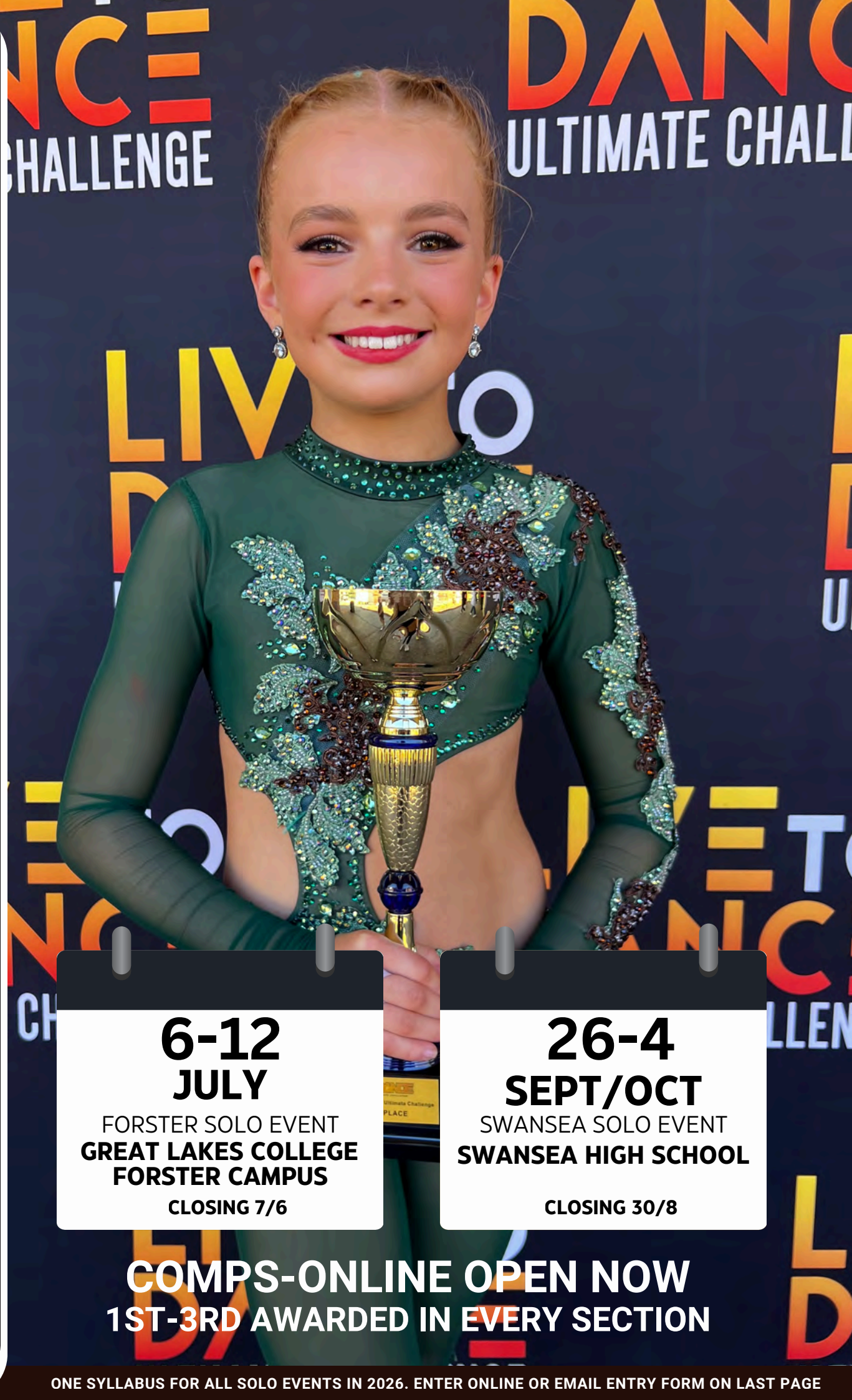


# 2026 SOLO EVENTS



**6-12  
JULY**

FORSTER SOLO EVENT  
**GREAT LAKES COLLEGE  
FORSTER CAMPUS**

**CLOSING 7/6**

**26-4**

**SEPT/OCT**

SWANSEA SOLO EVENT  
**SWANSEA HIGH SCHOOL**

**CLOSING 30/8**

**COMPS-ONLINE OPEN NOW**  
**1ST-3RD AWARDED IN EVERY SECTION**



1ST-3RD  
AWARDED IN  
ALL  
SECTIONS



CASH  
AWARDS

INDUSTRY  
JUDGES

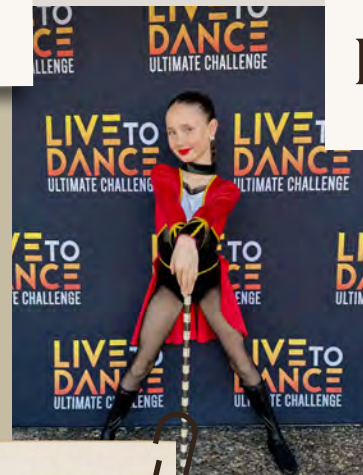


TARKETT

INDIVIDUAL AGES



MP4 ADJUDICATION  
VIDEO



FRIENDLY

LTDUC  
SOLO  
COMPETITION

SOLO'S



no cost  
MUSIC  
UPLOAD

DUO'S+TRIO'S

BACKSTAGE  
MANAGER



DESIGNATED  
CHANGING  
SPACES  
PROVIDED



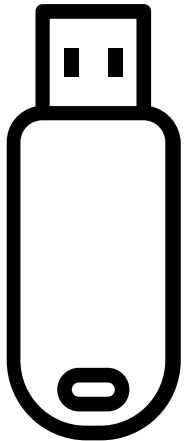
PROGRAM  
BLOCKING



PLEASE NOTE CD'S WILL BE ACCEPTED AT LTDUC EVENTS

# MUSIC

UPLOAD + COLLECTION DETAILS



x1

HAND IN  
ALL MUSIC  
ON ONE  
USB

NOTE: NEW  
DROP BOX  
PROVIDED  
EACH EVENT

OR

UPLOAD  
ONLINE TO THE  
DROP BOX  
PROVIDED



remember to label  
each track as per  
instructions below

## HOW TO LABEL YOUR TRACK

EACH TRACK MUST BE CLEARLY LABELLED WITH  
SECTION NUMBER, COMPETITOR NUMBER,  
COMPETITOR NAME AND STARTING CUE

E.G S1-C1-NAMEON

TO RENAME YOUR TRACK SIMPLY RIGHT CLICK +  
SELECT THE RENAME OPTION

**LIVE TO  
DANCE**  
ULTIMATE CHALLENGE





# ENTRY FEES

**SOLO**

**25**

**IMPROVISATION**

**22**

**CHAMPIONSHIP**

**33**

**DUO/TRIO**

**40**

**ELECTRONIC PROGRAM**

**8**

**ENTER ONLINE**

[WWW.comps-online.com.au](http://WWW.comps-online.com.au)

See page 6 for full instructions

**EMAIL ENTRY FORM**

[LTDUCentries@gmail.com](mailto:LTDUCentries@gmail.com)

Enquiries: [livetodanceultimatechallenge@gmail.com](mailto:livetodanceultimatechallenge@gmail.com)

OR Call: Sally 0407 977 760

NO ENTRIES WILL BE ACCEPTED AFTER CLOSING DATES TO ASSIST PROGRAM DISTRIBUTION

## SOLO DUO + TRIO SECTIONS

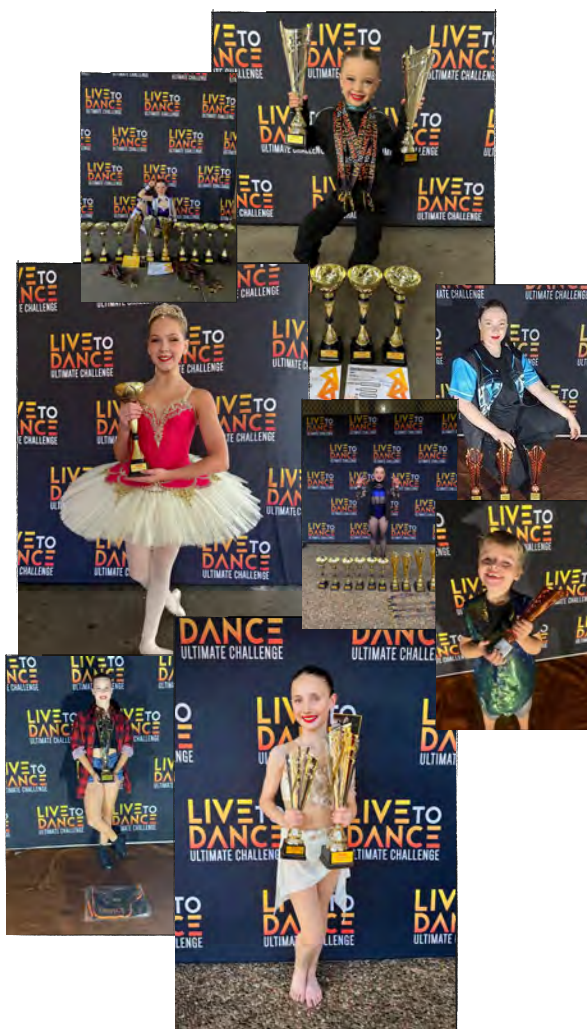
**BABIES:** YOU MAY ENTER MORE THAN ONE ROUTINE IN THESE SECTIONS. REPEATS ARE ALLOWED FOR CHAMPS.

**SPECIALLY RESTRICTED:** FOR COMPETITORS WHO HAVE NOT WON A SPECIALLY RESTRICTED SECTION OF THAT STYLE.

**RESTRICTED:** FOR COMPETITORS WHO HAVE WON IN A SPECIALLY RESTRICTED SECTION OF THAT STYLE.

**OPEN:** FOR COMPETITORS WHO HAVE WON IN A RESTRICTED SECTION IN THAT STYLE.

**NOTE:** WHEN A PERFORMER MOVES UP AN AGE GROUP THEY DO NOT GO REVERT BACK TO SPECIALLY RESTRICTED BUT STAY IN THE DIVISION THEY ARE CURRENTLY





# ENTER ONLINE

Go to : [www.comps-online.com.au](http://www.comps-online.com.au)

- Click the **LOGIN** button next to Live To Dance Ultimate Challenge -CENTRAL COAST/ FORSTER/ SWANSEA.
- Select **Click Here to Create a New Account**. Once you have filled in your details, you will be emailed a confirmation document. Click on the link in this email to activate your account. Then you can simply log back in and follow the 5 steps to complete all of your entries. **If you already have an account with Comps-Online, skip this step and just login.**
- Click on **Step 2** – to enter your **Competitor's Names**
- Click on **Step 3** – to select your required **Sections**.
- Programs can be purchased in **Step 4 – Programs/Other**.
- Proceed to the **Payments Page – Step 5** to review your entry summary and click to accept the terms and conditions of the competition (compulsory). Select Pay Pal as your payment option and and once you click submit, you will be transferred directly to **Pay Pal** to make your credit card payment
- An invoice will be emailed to you confirming that your registration has been received. **Please Note: If you do not receive an invoice within 1 hour in your Inbox or in your Junk Mail folder, please contact Comps-Online Technical Support on (03) 9841 5940.**

All of your information will be securely stored on the Comps-Online website for future competitions.

**Please note that registrations for this competition can only be accepted once full payment has been received.**



ENQUIRIES: [livetodanceultimatechallenge@gmail.com](mailto:livetodanceultimatechallenge@gmail.com) OR mobile 0407977760

## RULES and CONDITIONS OF ENTRY-Including Privacy Policy

Live to Dance Ultimate Challenge respects the privacy of all our users and we are committed to safeguarding the personal information which you provide us. Live to Dance Ultimate Challenge uses Comps-Online for their online registration.

To protect your privacy, Comps-Online only collect information necessary to process your registration and purchases. Please read their privacy policy carefully before using the Comps-Online website. This information is collected to enable Comps-Online to process your registration and purchases and to enable users to retrieve lost passwords. Comps-Online will only pass on necessary information provided by you, to us for administration and scheduling purposes.

After you complete your online registration, within a few minutes you will receive an email confirmation from Pay Pal and a Comps-Online invoice containing your order details.

The organisers are not responsible for incorrect entries. Once entries have been accepted, no refunds will be given unless the section is cancelled. Entries will not be added to the schedule until full payment has been received. The organisers reserve the right to combine sections if deemed necessary.

If you have placed an order on merchandise (e.g. Printed program) we will send your goods via Australia Post once the event has been finalised. If you wish to query a delivery, please contact us at [livetodanceultimatechallenge@gmail.com](mailto:livetodanceultimatechallenge@gmail.com)

**Age** is the age they are on the first day of competition for the following dates.  
Forster Solo Event - 7, July 2025  
Swansea Solo Event 27, September 2025. Duos/Trios age is taken from the eldest performer. **Repeats will be allowed**

**SOLO Music** - we will be taking music on USB or via DROPBOX upload. EACH TRACK must be clearly labelled with the section number, competitor number competitor name and where they start their routine (on or off) E.g S1-C1 NAMEON. CDs will still be accepted and should be clearly labelled with the section number, competitor name, and competitor number.  
NOTE - A new drop box link will be provided each event

Duo's and Trios have a **time limit** of 4 min. Solo's have a time limit of 3 min.

**Championships** all competitors entered into championship sections must enter and compete in the section and improvisation of that genre to quality. LTDUC does not take responsibility for notifying those competitors not entered in the correct qualifying sections.

**Injuries** No responsibility will be accepted by the organisers of any injury, accident or loss of any property occurred by all persons and competitors attending the Dance Challenge

**Improvisations** Any plain class leotard or dance attire, including 2 piece or dance pants. No glitz. Demi-Character requires competitors to use at least two props which they may view backstage at the beginning of the section. The Mystery Improvisation allows competitors to dance any style they feel suits the music played. Competitors are encouraged to take multiple shoes side stage with them, should they need to change.

**No Resin is to be used. Harlequin floor is provided and resin will cause the floor to become slippery.**

**No Changing** inside the venue, please use the changing areas provided. Under the NSW Child Protection Act, all dressing and undressing is to be done in the designated areas.

Please use **tap covers** or remove tap shoes within the Venue.

**Venue** to be cleared for cleaning at the end of each session - weather permitting. Any competitor using feathers, glitter, hay or any other loose materials within their performance will need to advise backstage and sound desk prior to section and will need to supply one person to assist with sweeping the stage- **STRICTLY NO POWDER TO BE USED** as this causes the floor to become slippery and is a safety hazard to other performers.

**Prompting** back-stage will only be allowed in the 3/u, 4/u & 5/u Any-style sections and championships, the 6/u troupe sections and the inclusive sections.

LTDUC has the right to **combine sections** where necessary.

No teachers, mothers/helpers side-stage except in babies section or when props are required. However you may accompany your competitor/s to the **backstage** holding area  
Arrival time

Competitors should **arrive** at least 30 minutes before estimated start time of Section

No personal video - or photography will be permitted inside the venue. A professional videographer and photographer are available on the day. You must order your photos before your competitor performs. All items are filmed and are available for purchase after the event.

Any **protests** must be lodged at the back table in writing no later than 15 minutes after the end of the section. All protests must be accompanied by a \$100.00 fee. Protests will be dealt with by the Committee. The \$100.00 fee will be forfeited if the protest is dismissed.

**Teachers pass** must be shown upon entry. These passes are not transferrable.

**Postponed** event due to unforeseen circumstances. In the event of conditions beyond our control (COVID -19) we will notify all competitors of the decision to postpone. If competitors are unable to attend the new date they are able to transfer their entries to another LTDUC event.

**Any persons who approach the adjudicator during the festival may deem their child or studio disqualified. The Adjudicator's decision is final**

# FORSTER

## EVENT

### PROPOSED DATES







**\$150 CASH**

**6/U ULTIMATE PERFORMER  
8/U ULTIMATE PERFORMER  
10/U ULTIMATE PERFORMER**

**\$150 CASH**

**12/U ULTIMATE PERFORMER  
14/U ULTIMATE PERFORMER  
15/O ULTIMATE PERFORMER**



**MAJOR AWARDS**



**\$100 CASH**

**6/U SR+R RISING STAR  
8/U SR+R RISING STAR  
10/U SR+R RISING STAR**

**\$100 CASH**

**12/U SR+R RISING STAR  
14/U SR+R RISING STAR  
15/O SR+R RISING STAR**



**Junior Highest Scoring Improvisation (12/u)  
\$100 CASH  
Senior Highest Scoring Improvisation (13/o)  
\$100 CASH  
Novice Championship 1st place recipients  
Dance Bag  
Open Championship 1st place recipients  
\$50 CASH**

The above awards will be presented at our Forster Competition



# FORSTER ENTRIES

## ANY-STYLE MULTIPLE ENTRIES ACCEPTED

## ANY-STYLE CHAMPIONSHIP MULTIPLE ENTRIES ACCEPTED

3/u	4/u	5/u	6/u	3/u	4/u	5/u	6/u
-----	-----	-----	-----	-----	-----	-----	-----

## SPECIALLY RESTRICTED

JAZZ	BROADWAY JAZZ	HIP HOP	LYRICAL	CONTEMPORARY	CLASSICAL	DEMI CHARACTER
5/u	5/u	5/u	5/u	5/u	5/u	5/u
6/u	6/u	6/u	6/u	6/u	6/u	6/u
7/u	8/u	8/u	7/u	7/u	7/u	8/u
8/u	10/u	10/u	8/u	8/u	8/u	10/u
9/u	12/u	12/u	9/u	9/u	9/u	12/u
10/u	14/u	14/u	10/u	10/u	10/u	14/u
11/u	15/o	15/o	11/u	11/u	11/u	15/o
12/u			12/u	12/u	12/u	
13/u			13/u	13/u	13/u	
14/u			14/u	14/u	14/u	
15/o			15/o	15/o	15/o	

LTDUC HAS THE RIGHT TO COMBINE SECTIONS WHERE NECESSARY

SLOW TAP	WALTZ TAP	SPEED TAP	VARIETY*	MUSICAL THEATRE*	STUDENT CHOREOGRAPHY*	ACRO
5/u	5/u	5/u	5/u	5/u	5/u	5/u
6/u	6/u	6/u	6/u	6/u	6/u	6/u
8/u	8/u	8/u	8/u	8/u	8/u	8/u
10/u	10/u	10/u	10/u	10/u	10/u	10/u
12/u	12/u	12/u	12/u	12/u	12/u	12/u
14/u	14/u	14/u	14/u	14/u	14/u	14/u
15/o	15/o	15/o	15/o	15/o	15/o	15/o

\*Multiple entries accepted

# FORSTER ENTRIES

## RESTRICTED

JAZZ	BROADWAY JAZZ	HIP HOP	LYRICAL	CONTEMPORARY	CLASSICAL	DEMI CHARACTER
5/u	5/u	5/u	5/u	5/u	5/u	5/u
6/u	6/u	6/u	6/u	6/u	6/u	6/u
8/u	8/u	8/u	8/u	8/u	8/u	8/u
10/u	10/u	10/u	10/u	10/u	10/u	10/u
12/u	12/u	12/u	12/u	12/u	12/u	12/u
14/u	14/u	14/u	14/u	14/u	14/u	14/u
15/o	15/o	15/o	15/o	15/o	15/o	15/o

LTDUC HAS THE RIGHT TO COMBINE SECTIONS WHERE NECESSARY

SLOW TAP	WALTZ TAP	SPEED TAP	VARIETY*	MUSICAL THEATRE*
5/u	5/u	5/u	5/u	5/u
6/u	6/u	6/u	6/u	6/u
8/u	8/u	8/u	8/u	8/u
10/u	10/u	10/u	10/u	10/u
12/u	12/u	12/u	12/u	12/u
14/u	14/u	14/u	14/u	14/u
15/o	15/o	15/o	15/o	15/o

\*Multiple entries accepted



# FORSTER ENTRIES

OPEN SECTIONS							
JAZZ	BROADWAY JAZZ	HIP HOP	LYRICAL	CONTEMPORARY	CLASSICAL	DEMI CHARACTER	CLASSICAL VARIATION
5/u	5/u	5/u	5/u	5/u	5/u	5/u	8/u
6/u	6/u	6/u	6/u	6/u	6/u	6/u	10/u
7/u	8/u	8/u	7/u	7/u	7/u	8/u	
8/u	10/u	10/u	8/u	8/u	8/u	10/u	12/u
9/u	12/u	12/u	9/u	9/u	9/u	12/u	
10/u	14/u	14/u	10/u	10/u	10/u	14/u	14/u
11/u	15/o	15/o	11/u	11/u	11/u	15/o	
12/u	17/o		12/u	12/u	12/u		
13/u			13/u	13/u	13/u		
14/u			14/u	14/u	14/u		
15/o			15/o	15/o	15/o		
17/o			17/o	17/o	17/o		
	LTDUC HAS THE RIGHT TO COMBINE SECTIONS WHERE NECESSARY						
SLOW TAP	WALTZ TAP	SPEED TAP	VARIETY*	MUSICAL THEATRE*	STUDENT CHOREOGRAPHY*	ACRO	
5/u	5/u	5/u	5/u	5/u	5/u	5/u	
6/u	6/u	6/u	6/u	6/u	6/u	6/u	
8/u	8/u	8/u	8/u	8/u	8/u	8/u	
10/u	10/u	10/u	10/u	10/u	10/u	10/u	
12/u	12/u	12/u	12/u	12/u	12/u	12/u	
14/u	14/u	14/u	14/u	14/u	14/u	14/u	
15/o	15/o	15/o	15/o	15/o	15/o	15/o	

\*Multiple entries accepted

# FORSTER ENTRIES

## IMPROVISATION GENRES

NOVICE + OPEN DIVISIONS

JAZZ	MODERN LYRICAL	CONTEMPORARY	CLASSICAL	DEMI CHARACTER	TAP	MYSTERY	HIP-HOP
5/u	5/u	5/u	5/u	5/u	5/u	5/u	5/u
6/U	6/U	6/U	6/U	6/U	6/U	6/U	6/U
8/U	8/U	8/U	8/U	8/U	8/U	8/U	8/U
10/U	10/U	10/U	10/U	10/U	10/U	10/U	10/U
12/U	12/U	12/U	12/U	12/U	12/U	12/U	12/U
14/U	14/U	14/U	14/U	14/U	14/U	14/U	14/U
15/O	15/O	15/O	15/O	15/O	15/O	15/O	15/O

## IMPROVISATION CHAMPIONSHIP

NOVICE + OPEN DIVISIONS

6/U	8/U	10/U	12/U	14/U	15/O
-----	-----	------	------	------	------

To qualify, competitors must enter and compete in two improvisation genres. The improvisation championship will consist of one jazz style improvisation and one modern improvisation. Scores will be combined to determine award winners.

LIVE TO DANCE ULTIMATE CHALLENGE RESERVES THE RIGHT TO COMBINE SECTIONS IF DEEMED NECESSARY



# CHAMPIONSHIP

## NOVICE + OPEN DIVISIONS

JAZZ	MODERN LYRICAL	CONTEMPORARY	CLASSICAL	DEMI CHARACTER	TAP	ANY-STYLE	HIP-HOP
5/u	5/u	5/u	5/u	5/u	5/u	5/u	5/u
6/U	6/U	6/U	6/U	6/U	6/U	6/U	6/U
8/U	8/U	8/U	8/U	8/U	8/U	8/U	8/U
10/U	10/U	10/U	10/U		10/U	10/U	10/U
12/U	12/U	12/U	12/U	12/U	12/U	12/U	12/U
14/U	14/U	14/U	14/U	14/U	14/U	14/U	14/U
15/O	15/O	15/O	15/O	15/O	15/O	15/O	15/O

## CHAMPIONSHIP SECTIONS

We offer both **NOVICE** and **OPEN** Championship sections. Both require you to enter the improvisation section corresponding with the style of dance you have entered to qualify and specially restricted, restricted or open section of that style.

### Novice Championship

Novice Championships are for competitors who have not won first place in a novice championship or placed in an open championship for the respective genre. To qualify you must have danced in a Specially Restricted, Restricted or Open section in that category and an improvisation section of that style. In the Novice Championship section you will be required to perform one routine only. **Repeats are allowed.**

### Open Championship

To qualify you must have danced in a specially restricted, restricted or open section for that category and also entered the improvisation section for that Style.

For example: to qualify for a Jazz Championship you must have entered the a Jazz section and Jazz Improvisation for your age group. **Repeats Allowed.**

**In the Open Championship section you are required to perform one routine only.**

**Improvisation Championships entrants will perform two improvisations, a modern followed by a jazz.**

## INCLUSIVE SECTION FOR DANCERS WITH INDIVIDUAL NEEDS

Multiple entries accepted

12/U

13/O

Trophies and prizes awarded to all competitors in the inclusive section. **This section is free to enter.**

## DUOS/TRIOS - ANY STYLE Multiple entries accepted

6/u

8/u

10/u

12/u

14/u

15/o

Age is calculated from eldest competitor within the duo or trio, please refer to rules and conditions of entry

**LIVE TO DANCE ULTIMATE CHALLENGE RESERVES THE RIGHT TO COMBINE SECTIONS IF DEEMED NECESSARY.**





# SWANSEA

EVENT

## PROPOSED DATES

<b>26 SEPT</b> INCLUSIVE SECTIONS 7 YEARS	<b>27 SEPT</b> 4/5/6 YEARS 8 YEARS	<b>28 SEPT</b> 9 YEARS	<b>29 SEPT</b> 10 YEARS	<b>30 SEPT</b> 11 YEARS
<b>1 OCT</b> 12 YEARS	<b>2 OCT</b> 13 YEARS	<b>3 OCT</b> 14 YEARS	<b>4 OCT</b> 15/16/17 YEARS	

**SWANSEA EVENT WILL OFFER  
INDIVIDUAL AGE GROUPS IN  
SECTIONS, IMPROS AND  
CHAMPIONSHIPS.**





**\$150 CASH**

**6/U ULTIMATE PERFORMER  
7/U ULTIMATE PERFORMER  
8/U ULTIMATE PERFORMER  
9/U ULTIMATE PERFORMER  
10/U ULTIMATE PERFORMER**

**\$150 CASH**

**11/U ULTIMATE PERFORMER  
12/U ULTIMATE PERFORMER  
13/U ULTIMATE PERFORMER  
14/U ULTIMATE PERFORMER  
15/O ULTIMATE PERFORMER**



# MAJOR AWARDS



**\$100 CASH**

**6/U SR+R RISING STAR  
7/U SR+R RISING STAR  
8/U SR+R RISING STAR  
9/U SR+R RISING STAR  
10/U SR+R RISING STAR**

**\$100 CASH**

**11/U SR+R RISING STAR  
12/U SR+R RISING STAR  
13/U SR+R RISING STAR  
14/U SR+R RISING STAR  
15/O SR+R RISING STAR**



**Junior Highest Scoring Improvisation (12/u)  
\$100 CASH**

**Senior Highest Scoring Improvisation (13/o)  
\$100 CASH**

**Novice Championship 1st place recipients  
\$50 VOUCHER**

**Open Championship 1st place recipients  
\$50 CASH**

The above awards will be presented at our Swansea Competitions

# SWANSEA ENTRIES

ANY-STYLE MULTIPLE ENTRIES ACCEPTED				ANY-STYLE CHAMPIONSHIP MULTIPLE ENTRIES ACCEPTED			
3/u	4/u	5/u	6/u	3/u	4/u	5/u	6/u

SPECIALLY RESTRICTED						
JAZZ	BROADWAY JAZZ	HIP HOP	LYRICAL	CONTEMPORARY	CLASSICAL	DEMI CHARACTER
5/u	5/u	5/u	5/u	5/u	5/u	5/u
6/u	6/u	6/u	6/u	6/u	6/u	6/u
7/u	7/u	7/u	7/u	7/u	7/u	7/u
8/u	8/u	8/u	8/u	8/u	8/u	8/u
9/u	9/u	9/u	9/u	9/u	9/u	9/u
10/u	10/u	10/u	10/u	10/u	10/u	10/u
11/u	11/u	11/u	11/u	11/u	11/u	11/u
12/u	12/u	12/u	12/u	12/u	12/u	12/u
13/u	13/u	13/u	13/u	13/u	13/u	13/u
14/u	14/u	14/u	14/u	14/u	14/u	14/u
15/o	15/o	15/o	15/o	15/o	15/o	15/o
INCLUSIVE 14/U 18/U OR 19+		INCLUSIVE 14/U 18/U OR 19+	INCLUSIVE 14/U 18/U OR 19+	INCLUSIVE 14/U 18/U OR 19+		
	LTDUC HAS THE RIGHT TO COMBINE SECTIONS WHERE NECESSARY					
SLOW TAP	WALTZ TAP	SPEED TAP	VARIETY*	MUSICAL THEATRE*	STUDENT CHOREOGRAPHY*	ACRO
5/u	5/u	5/u	5/u	5/u	5/u	5/u
6/u	6/u	6/u	6/u	6/u	6/u	6/u
7/u	7/u	7/u	7/u	7/u	7/u	7/u
8/u	8/u	8/u	8/u	8/u	8/u	8/u
9/u	9/u	9/u	9/u	9/u	9/u	9/u
10/u	10/u	10/u	10/u	10/u	10/u	10/u
11/u	11/u	11/u	11/u	11/u	11/u	11/u
12/u	12/u	12/u	12/u	12/u	12/u	12/u
13/u	13/u	13/u	13/u	13/u	13/u	13/u
14/u	14/u	14/u	14/u	14/u	14/u	14/u
15/o	15/o	15/o	15/o	15/o	15/o	15/o
					INCLUSIVE 18/U OR 19+	

\*Multiple entries accepted

# SWANSEA ENTRIES

RESTRICTED						
JAZZ	BROADWAY JAZZ	HIP HOP	LYRICAL	CONTEMPORARY	CLASSICAL	DEMI CHARACTER
5/u	5/u	5/u	5/u	5/u	5/u	5/u
6/u	6/u	6/u	6/u	6/u	6/u	6/u
7/u	7/u	7/u	7/u	7/u	7/u	7/u
8/u	8/u	8/u	8/u	8/u	8/u	8/u
9/u	9/u	9/u	9/u	9/u	9/u	9/u
10/u	10/u	10/u	10/u	10/u	10/u	10/u
11/u	11/u	11/u	11/u	11/u	11/u	11/u
12/u	12/u	12/u	12/u	12/u	12/u	12/u
13/u	13/u	13/u	13/u	13/u	13/u	13/u
14/u	14/u	14/u	14/u	14/u	14/u	14/u
15/o	15/o	15/o	15/o	15/o	15/o	15/o
LTDUC HAS THE RIGHT TO COMBINE SECTIONS WHERE NECESSARY						
SLOW TAP	WALTZ TAP	SPEED TAP	VARIETY*	MUSICAL THEATRE*		
5/u	5/u	5/u	5/u	5/u		
6/u	6/u	6/u	6/u	6/u		
7/u	7/u	7/u	7/u	7/u		
8/u	8/u	8/u	8/u	8/u		
9/u	9/u	9/u	9/u	9/u		
10/u	10/u	10/u	10/u	10/u		
11/u	11/u	11/u	11/u	11/u		
12/u	12/u	12/u	12/u	12/u		
13/u	13/u	13/u	13/u	13/u		
14/u	14/u	14/u	14/u	14/u		
15/o	15/o	15/o	15/o	15/o		

\*Multiple entries accepted



# SWANSEA ENTRIES

OPEN SECTIONS							
JAZZ	BROADWAY JAZZ	HIP HOP	LYRICAL	CONTEMPORARY	CLASSICAL	DEMI CHARACTER	CLASSICAL VARIATION
5/u	5/u	5/u	5/u	5/u	5/u	5/u	8/u
6/u	6/u	6/u	6/u	6/u	6/u	6/u	10/u
7/u	7/u	7/u	7/u	7/u	7/u	7/u	11/u
8/u	8/u	8/u	8/u	8/u	8/u	8/u	12/u
9/u	9/u	9/u	9/u	9/u	9/u	9/u	13/u
10/u	10/u	10/u	10/u	10/u	10/u	10/u	14/u
11/u	11/u	11/u	11/u	11/u	11/u	11/u	15/o
12/u	12/u	12/u	12/u	12/u	12/u	12/u	
13/u	13/u	13/u	13/u	13/u	13/u	13/u	
14/u	14/u	14/u	14/u	14/u	14/u	14/u	
16/u	16/u	15/o	16/u	16/u	16/u	15/o	
17/o	17/o		17/o	17/o	17/o		
	LTDUC HAS THE RIGHT TO COMBINE SECTIONS WHERE NECESSARY						
SLOW TAP	WALTZ TAP	SPEED TAP	VARIETY*	MUSICAL THEATRE*	STUDENT CHOREOGRAPH Y*	ACRO	
5/u	5/u	5/u	5/u	5/u	5/u	5/u	
6/u	6/u	6/u	6/u	6/u	6/u	6/u	
7/u	7/u	7/u	7/u	7/u	7/u	7/u	
8/u	8/u	8/u	8/u	8/u	8/u	8/u	
9/u	9/u	9/u	9/u	9/u	9/u	9/u	
10/u	10/u	10/u	10/u	10/u	10/u	10/u	
11/u	11/u	11/u	11/u	11/u	11/u	11/u	
12/u	12/u	12/u	12/u	12/u	12/u	12/u	
13/u	13/u	13/u	13/u	13/u	13/u	13/u	
14/u	14/u	14/u	14/u	14/u	14/u	14/u	
15/o	15/o	15/o	15/o	15/o	15/o	15/o	

\*Multiple entries accepted

# SWANSEA ENTRIES

## IMPROVISATION GENRES

NOVICE + OPEN DIVISIONS

JAZZ	MODERN LYRICAL	CONTEMPORARY	CLASSICAL	DEMI CHARACTER	TAP	MYSTERY	HIP-HOP
5/u	5/u	5/u	5/u	5/u	5/u	5/u	5/u
6/U	6/U	6/U	6/U	6/U	6/U	6/U	6/U
7/U	7/U	7/U	7/U	7/U	7/U	7/U	7/U
8/U	8/U	8/U	8/U	8/U	8/U	8/U	8/U
9/U	9/U	9/U	9/U	9/U	9/U	9/U	9/U
10/U	10/U	10/U	10/U	10/U	10/U	10/U	10/U
11/U	11/U	11/U	11/U	11/U	11/U	11/U	11/U
12/U	12/U	12/U	12/U	12/U	12/U	12/U	12/U
13/U	13/U	13/U	13/U	13/U	13/U	13/U	13/U
14/U	14/U	14/U	14/U	14/U	14/U	14/U	14/U
15/O	15/O	15/O	15/O	15/O	15/O	15/O	15/O
INCLUSIVE 14/U 18/U OR 19+	INCLUSIVE 14/U 18/U OR 19+	INCLUSIVE 14/U 18/U OR 19+				INCLUSIVE 14/U 18/U OR 19+	INCLUSIVE 14/U 18/U OR 19+

## IMPROVISATION CHAMPIONSHIP

NOVICE + OPEN DIVISIONS

6/U	8/U	10/U	12/U	14/U	15/O	INCLUSIVE 14/U 18/U OR 19+
-----	-----	------	------	------	------	-------------------------------

To qualify, competitors must enter and compete in two improvisation genres. The improvisation championship will consist of one jazz style improvisation and one modern improvisation. Scores will be combined to determine award winners.

LIVE TO DANCE ULTIMATE CHALLENGE RESERVES THE RIGHT TO COMBINE SECTIONS IF DEEMED NECESSARY

# CHAMPIONSHIP

## NOVICE + OPEN DIVISIONS

JAZZ	MODERN LYRICAL	CONTEMPORARY	CLASSICAL	DEMI CHARACTER	TAP	ANY-STYLE	HIP-HOP
5/u	5/u	5/u	5/u	5/u	5/u	5/u	5/u
6/U	6/U	6/U	6/U	6/U	6/U	6/U	6/U
7/U	7/U	7/U	7/U	7/U	7/U	7/U	7/U
8/U	8/U	8/U	8/U	8/U	8/U	8/U	8/U
9/U	9/U	9/U	9/U	9/U	9/U	9/U	9/U
10/U	10/U	10/U	10/U	10/U	10/U	10/U	10/U
11/U	11/U	11/U	11/U	11/U	11/U	11/U	11/U
12/U	12/U	12/U	12/U	12/U	12/U	12/U	12/U
13/U	13/U	13/U	13/U	13/U	13/U	13/U	13/U
14/U	14/U	14/U	14/U	14/U	14/U	14/U	14/U
15/O	15/O	15/O	15/O	15/O	15/O	15/O	15/O
				ANY-STYLE	INCLUSIVE 14/U, 18/U,19+		

We offer both **NOVICE** and **OPEN** Championship sections. Both require you to enter the improvisation section corresponding with the style of dance you have entered to qualify and specially restricted, restricted or open section of that style.

### Novice Championship

Novice Championships are for competitors who have not won first place in a novice championship or placed in an open championship for the respective genre. To qualify you must have danced in a Specially Restricted, Restricted or Open section in that category and an improvisation section of that style. In the Novice Championship section you will be required to perform one routine only. **Repeats are allowed.**

### Open Championship

To qualify you must have danced in a specially restricted, restricted or open section for that category and also entered the improvisation section for that Style.

For example: to qualify for a Jazz Championship you must have entered the a Jazz section and Jazz Improvisation for your age group. **Repeats Allowed.**

**In the Open Championship section you are required to perform one routine only.**

**Improvisation Championships entrants will perform two improvisations, a modern followed by a jazz.**

## INCLUSIVE SECTIONS

SEE ABOVE ENTRY TABLES FOR A RANGE OF INCLUSIVE SECTIONS.

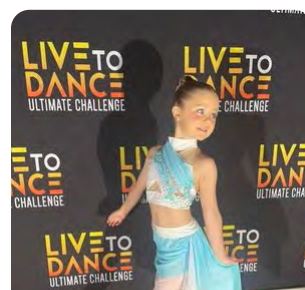
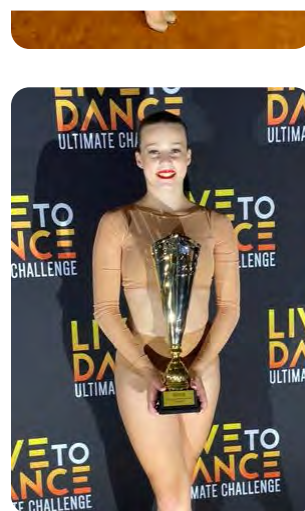
Trophies and prizes awarded to all competitors in the inclusive section. **This section is free to enter.**

### DUOS/TRIOS - ANY STYLE Multiple entries accepted

6/u	8/u	10/u	12/u	14/u	15/o
-----	-----	------	------	------	------

Age is calculated from eldest competitor within the duo or trio, please refer to rules and conditions of entry

**LIVE TO DANCE ULTIMATE CHALLENGE RESERVES THE RIGHT TO COMBINE SECTIONS IF DEEMED NECESSARY.**





ONLY COMPLETE THIS FORM IF ENTERING VIA EMAIL. THIS FORM IS NOT  
REQUIRED IF ENTERING ONLINE. EMAIL COMPLETED ENTRY FORM  
TOLTDUCENTRIES@GMAIL.COM PRIOR TO THE CLOSING DATE. A NEW ENTRY  
FORM IS REQUIRED FOR EACH EVENT.

\_\_\_\_\_

\_\_\_\_\_

--

\_\_\_\_\_

\_\_\_\_\_

\_\_\_\_\_

\_\_\_\_\_

\_\_\_\_\_

Please use the below information for bank transfer. Use your competitors last name and initial as your reference.

## THANK YOU FOR YOUR REGISTRATION

**TOTAL**

**\$7**